



NAUTOR-SWAN 82S  
SEDNA

 YACHTS  
Ancasta

# INTRODUCTION

The Swan 82S is the ultimate refinement of the popular Nautor's Swan 82. SEDNA is maintained to the highest BV Ocean A and MCA Class standards, her classifications allow you to generate charter revenue if you wish. At her heart and soul, she is a proper sailing yacht. At her helm, you feel her speed, power, and seaworthiness. While your guests and family will enjoy the comfort, safety and spaciousness of her large cockpit. In short, generous accommodation, lively sailing performance and Nautor's Swan pedigree all at an exceptional price.



SEDNA

 YACHTS



SEDNA

 YACHTS

# SPECIFICATION

Name	Sedna
Model	82S
Builder:	Nautor-Swan
Designer:	German Frers
Engine	Cummins 6BTA5.9 - 180HP
Year built	2009
Location	Cruising
Price	€ 3,000,000 (Tax Not Paid)

Length Overall	24.89 m	81.66 ft
Length at Water Line	21.26 m	69.75 ft
Max Beam	5.86 m	12.83 ft
Draught	34.2 m	13.75 ft
Displacement (light)	41,000 kg	
Ballast	13,300 k	

# CONSTRUCTION

## HULL

- The hull is of single skin construction using glass/aramid hybrid fiber reinforced vinylester laminate with carbon fiber reinforcements. A high proportion of the fibres are unidirectional, giving a stiff laminate with excellent strength and fatigue properties. Stiffener flanges are unidirectional carbon lay-ups over foam cores. Engine beds are of GRP with steel inserts. Structural bulkheads are Nomex honeycomb cored carbon fibre epoxy prepreg construction and laminated to hull and deck. Carbon fibre chain plates for the main shrouds are bonded to the hull and reinforce the structure to the bulkhead.
- Six hull windows, flush with frame and hull on outside, dark tinted. NEW PAINT October 2017

## DECK

- The deck is a carbon fibre pre-preg sandwich construction with a Nomex honeycomb core, glued to the hull.
- Coachroof, deckhouse and cockpits of glass fibre reinforced vinylester with low-density foam core
- Laid teak on side and bridge deck, cockpit soles and seats, glued and vacuum bagged
- 30mm teak toe rail
- Removable helmsman seats covering 2 x 6 person hard canister liferafts and 1 soft valise liferaft
- U-Shaped settees on both sides of center cockpit with tables on either side.

## DECK EQUIPMENT

- Roller fairleads built into forward legs of pushpit.
- 6x Versari-Delmonte pop-up cleats
- 8x Versari & Delmonte pop-up fairleads
- Folding seats on pushpit, both sides aft
- Cradle and pad eyes on foredeck for dinghy
- Stanchions, 700 mm high with spacing conforming to ISAF/ORC requirements. Stainless 6mm wire lifelines
- Gates in lifelines on both side amidships and in the push pit.
- Two varnished teak cockpit tables with folding leaves, one for each settee. The tables are fixed on telescopic supports and can be manually lowered to the level of the cockpit seats

## HATCHES AND WINDOWS

- Nautor custom made flush mounted tinted acrylic hatches with gutters and frames.
- Gas cylinders support all hatches.
- Four Giot Cristal openable tinted acrylic portholes in coamings with white painted aluminium frames
- Three flush deck prisms in the cockpit above the corridor to the owner's cabin
- Locking companionway has a manually operated sliding hatch and sliding drop board.

## STEERING SYSTEM

- Twin Destroyer type steering wheels in teak with carbon spokes and reinforcement
- Dual steering gear and sheaves with guards to prevent jamming. A lightweight aluminium steering quadrant is bolted to the rudderstock. Two wheels, 4 turns H.O. to H.O. The pedestals have bearings and a friction brake. The rudder is foam filled carbon fibre/epoxy skins with a tubular carbon fibre stock, rudder pulled and inspected in 2012. Weed deflector in front of the rudder. Emergency tiller stowed in the lazarette.

## SWIM PLATFORM

- The hydraulically controlled transom door/bathing platform fitted with teak sole. Two custom-built stainless steel rams hydraulically operate the door. Lazarette is separated with a watertight bulkhead from the interior.
- Platform opened by buttons in lazarette door or pocket-sized wireless remote.

## BOARDING AND BATHING LADDERS

- Custom-built stainless steel boarding ladder allowing boarding the vessel from the side. Storage for the boarding ladder is in the sail locker. Swimming ladder connects to swim platform via flush stainless steel fittings, three steps below water level. A ladder with teak treads leads from the main deck to the platform.



SEDNA

 YACHTS  
Ancasta

# RIG

## MAST

- Offshore Spars carbon fibre four-spreader masthead rig with discontinuous shrouds and 18° swept spreaders
- Finished in white awlgrip
- Carbon fibre masthead has Harken sheaves for two jib halyards, two masthead spinnaker halyards, one mainsail and one spare mainsail halyard
- Staysail halyard located under the inner forestay
- One lightning strike rod and cable run to the bilge internal wiring, shielded in PVC tubes secured to the mast. The boom and boom vang goosenecks are composite fabrications bonded to the mast
- Water stop installed at the height of the lowest halyard exit
- Spreader lights
- Harken switch track for full-batten mainsail
- Trysail track.

## BOOM

- Offshore Spars carbon fibre park-avenue boom, painted white
- The outboard end has sheaves for three reefs and an outhaul
- The inboard end has sheaves for three reef lines leading to the deck
- A double grooved anodized aluminium track is bonded to the inside perimeter of the boom top for awning and sail cove

## RIGGING

- Navtec Nitronic Rod
- Running Rigging - complete package; halyards, sheets, preventers, control lines & spare

## GENOA FURLER

- Reckman hydraulic furler with alloy foil

## SAILS

- New in 2015 - Quantum Fusion Mainsail and Jib
- 2009 - Trisail and Stay sail

## RIG HYDRAULICS

- Manual four-function one-gauge System 50 central control panel with two-speed pump in aft cockpit for backstay, outhaul, jib halyard, and inner forestay
- Separate System 50 panel for the boom vang, connected to power pack
- Cylinders for backstay legs, mainsail outhaul, for jib halyard cylinder on side of mast, and for inner forestay below deck
- Boom vang with high-pressure return, and quick release controls both sides in cockpit
- Removable hydraulic mast jack with two 25-ton external cylinders and The assembly includes a high-pressure manual pump, gauge, hydraulic hose and quick disconnect.

## WINCHES

- Harken Winches All self-tailing
- Primary winches 2 x B1111.3 STCAC EH (Electric, carbon top & base)
- Secondary winches 2 x B990.£ STR EH AD (Electric, carbon top)
- Utility winches 2 x B990.3 STR EH AD (Electric, carbon top)
- Mainsheet 1 x B1111.3 STCAC EH (Electric, carbon top & base)

# RIG

## SAIL HANDLING SYSTEMS

- Mainsheet deck lead for a 2:1 main sheet on a winch console
- Stainless jib sheet tracks Harken with Harken cars and Harken end stops.
- Genoa sheet runs underdeck to primary winch
- Two Harken cars for the stay sail sheets.
- Staysail sheets led to genoa cars or via snatch blocks
- Two runner blocks Harken + dead end Harken pad eyes
- Eight Harken roller bearing lead blocks for halyards and reef lines at the mast partners
- Four Spinlock jammers on the port side at the mast for reef lines and halyards
- Four Spinlock jammers on the starboard side at the mast for reef lines and halyards
- One Spinlock jammer on port side for the tack line



SEDNA

 YACHTS  
Ancasta

# ACCOMMODATION

## GENERAL

- All visible interior wood finished in hand rubbed satin varnish
- Crème soft upholster in saloon
- All guest cabins are fitted with a reading light with a separate light switch at the head of each berth
- LED overhead lighting throughout

## CREW CABIN

- Upper and lower berths to port
- Settee to starboard with folding table. Settee doubles as a berth plus pipe berth to starboard
- Ensuite head forward with WC, washbasin, mirror, storage lockers and shower

## GALLEY

- Countertops finished in Corian – colour cameo white
- Two stainless steel sink inboard
- Gimbale Force 10 oven with four burner gas stove is located outboard in heat shielded space
- Retractable extractor fan above cooker with light
- Front loading refrigerator forward and outboard
- Top loading freezer aft and outboard
- Storage lockers and drawers for all galley equipment

## GALLEY EQUIPMENT

- Integrated Miele Washer/dryer.
- Miele microwave
- Icemaker, Icerette 230 V in saloon
- Waste disposal unit, 55 in-sink-erator

## FORWARD GUEST CABIN (PORT)

- Double berth outboard
- Storage lockers below berth
- Hanging locker forward of berth
- Ensuite head forward with WC, washbasin, mirror, storage lockers and shower

## SALOON

- U-shaped settee to port with dining table and two chairs
- L-shaped settee to starboard with coffee table
- Storage lockers and hull windows on either side outboard

## NAV STATION

- Located in aft starboard corner of saloon
- Outboard facing navigators seat with opening chart table
- Flush mounted instrument displays
- Drawers and storage lockers for navigation aids, charts and books
- Electrical panel and control center located aft

## AFT STARBOARD GUEST CABIN

- Two single berths inboard and outboard with storage drawers below
- Shelf outboard and between the berths forward
- Storage lockers with louvered doors outboard
- Ensuite head forward with WC, washbasin, mirror, storage lockers and shower

# ACCOMMODATION

## AFT PORT GUEST CABIN

- Two single berths inboard and outboard with storage drawers below
- Pullman berth
- Shelf outboard and between the berths forward
- Ensuite head aft with WC, washbasin, mirror, storage lockers and shower

## AFT CABIN (MASTER)

- Centerline double berth aft bedside shelves and reading lights
- Storage drawers below berth
- Settee to starboard with hanging lockers, drawers and shelves forward and aft
- Open top vanity desk to port with folding seat
- Hanging lockers, drawers and shelves forward and aft on port side
- Ensuite head forward with WC, washbasin, mirror, storage lockers and separate shower stall



SEDNA

 YACHTS  
Ancasta



SEDNA

 YACHTS



SEDNA

 YACHTS  
Ancasta



SEDNA

 YACHTS



SEDNA

 YACHTS



SEDNA

 YACHTS



SEDNA

 YACHTS  
Ancasta



SEDNA

 YACHTS

## ELECTRONIC SYSTEMS

- Brookes and Gatehouse (B&G) Sailing Instruments (upgraded in 2016)
- H3000 Hercules Performance Base Pack - Monochrome BGH 300003 including
- CPU: Hercules Performance, includes Deckman
- GFD Hercules (Monochrome) at nav station
- Vertical masthead unit 1450 mm, BGH30003.
- Halcyon Gyro-stabilized compass with Halcyon Gyro processor, BGH60001.
- Paddlewheel speed sensor with plastic flanged housing, SEN-SPD-HP.
- Depth sensor with plastic flanged housing, SEN-DPT-HP.
- Barometric pressure sensor, 690-00-007.
- 3x Additional FFD Hydra displays in crew cabin, owner cabin and fwd guest cabin
- 3 x 30/30 displays, BGH240001, on the mast
- 4 x H3000 FFD Hydra displays, GH200001 two on each side in cockpit.
- 2 x H3000 360deg wind direction display, BGH230002, one on each side in cockpit.
- 2 x H3000 20/20 display (red backlight) BGH270001, one on each side in cockpit.

## NAVIGATION INSTRUMENTS

- GPS/WAAS receiver, Furuno GP-320B, connected to Furuno radar/plotter.
- Backup GPS/DGPS/WAAS receiver, Furuno GP-37, display at nav station. Navtex receiver Furuno NX-300, including H-field antenna NX-3H-D. Dual frequency receiver (490,518kHz). AIS transponder Furuno FA-150 including GPS and AC Marine CX4 VHF antennas. Connected to radar/plotter, GPS and VHF antenna.

## AUTOPILOT SYSTEM

- Autopilot system B&G H3000 ACP2 pilot pack monochrome BGH300051 including:
  - - pilot display unit in cockpit GRP-box
  - - ACP2 computer unit
  - Rudder reference unit.
  - Hydraulic constant running pump with twin hydraulic cylinders.

## RADAR SYSTEM

- Furuno Navnet 10" display at nav station
- Furuno Navnet 10" display on deck, back of mainsheet winch console
- Furuno DRS4D NavNet 3D 4 kW 24" radome antenna on radar post

## COMPUTER SYSTEMS

- HP computer running Windows 7
- - Intel® Core™ 2 Duo processor E6600
- - 17-inch computer monitor Dell UltraSharp, installed at nav station.
- - RF keyboard/mouse
- Printer /Scanner HP Deskjet

## COMMUNICATIONS SYSTEMS

- Sat phone Iridium Motorola 9505A including connection to computer.
- Sat Com Fleet 33 Thrane & Thrane TT-3088A for Voice/Fax. Data interface connected to onboard computer.
- SSB (Europe), Sailor 4000 MF/HF 150 W, mounted at chart table
- Yachtspot Internet Wi-Fi system supports yachts WLAN
- WLAN antenna AC Marine CEL24

## ENTERTAINMENT SYSTEMS

- Home entertainment system (DVD/CD/AM/FM) in saloon, Bose Lifestyle 38 with integrated hard drive and with five cube speakers mounted in ceiling and woofer in saloon table, multi regional above and below deck sound system
- Waterproof Sony speakers in cockpit
- Widescreen LCD Samsung 41" in Saloon on port side forward (new 2013)
- Neovo LCD screens in each guest cabin (4) with Yamaha DVD/Blue Ray players (all new 2013)

## ANCHORING AND MOORING

- 1 - CQR 140 lbs
- 1- Fortress FX-85
- Anchor chain 12mm, 20 meter of grade 40 galvanized chain
- Mooring lines 24mm bla

## GENERAL EQUIPMENT

- 4.6m / 15' Mercury rib tender, with E-TEC 50 hp (new 2015) water-skis, wake boards, paddle boards, fishing gear, snorkelling gear, towables, beach games
- Gangway - Multiplex Carbon 3.2m gangway, custom paint with carbon stanchions
- Swim ladder - Stainless steel stored in lazarette fits onto bathing platform
- Pushpit seats fold up located port and starboard
- Custom cockpit table , fold up leaves manually adjustable height
- Cutlery, glasses, crockery and kitchen utensils all onboard and installed in custom holders

## FIRE FIGHTING EQUIPMENT

- Eight portable extinguishers in interior. Fire blanket in galley.
- Total flooding Clean Agent (FM200) fire extinguishing system for the engine room space with a manual remote control.
- Raymarine CAM 50 PAL camera in engine room
- Two fire hydrants with hose reel, one forward and one aft

## CANVAS WORK

- Removable bimini, Sunbrella.
- Cockpit cushions, Sunbrella, with piping:
- Cushions for pushpit seats including backrests, Sunbrella.
- Sun deck cushions 700 x 2000 mm, Sunbrella.
- Sun awning over boom.
- Main sail cover, Sunbrella
- Steering pedestal covers, Sunbrella
- Winch covers, Sunbrella.
- Canvas cover for cockpit tables.
- Canvas skirt for lazarette.
- Covers for Jonbuoys.
- Covers for life ring
- Bow protection in canvas with three pockets, padded with GRP and two straps on top.

# INVENTORY

## SAFETY EQUIPMENT

- 2 x 6 person liferafts in hard canisters
- 1 x 6 person soft canister liferafts
- 1 Man Overboard Module MOM MK VIII
- 2 x Jonbuoy
- 2 x horseshoe buoys
- 24 x inflatable lifejackets with AIS and lifeline
- Jackstays on deck
- Medaire offshore medkit
- Safety belts for navigator and cook.
- Burglar Alarm - cobra Bridge 7917
- IP weatherproof camera Axis 225FD

## OTHER

- Owner's Manual in English including manuals supplied by equipment manufacturers in the language(s) provided by such manufacturers.
- Winch handles: two 10" lock-in, two 10" single grip, one ratchet.
- Teak flagpole
- Inflatable paddleboard
- Swimming and diving gear.
- Plumbing spare parts
- Engine and generator spare parts
- Electric spare parts
- Basic Engine and generator tool kits.
- One bosun's chair
- Sounding rods for fuel and water tanks

# MACHINERY

## ENGINE ROOM

- The cabins, corridor and saloon are sound insulated from the noise of the engine. There are various layers of rock wool with noise barrier sheets in between. The engine room doors and lids are of similar construction as the surrounding partitions. They close onto rubber faced landings for maximum noise reduction.
- Engine space is internally sound insulated, as is the propeller area

## ENGINE & SYSTEMS

- Cummins 6BT5.9M 180 horse power (134kw), with direct mounted reduction gear
- Engine and reduction gear are supported on flexible mounts.
- Hi tensile stainless steel shaft with Varifold propeller.
- The shaft is supported by water lubricated rubber bearings at the P-bracket and stern tube.
- Drip-free shaft seal.

## FUEL SYSTEM

- Four stainless steel fuel tanks with capacity of 1850 ltrs (488 USg).
- Fuel valve chest with return valve for each tank
- A dual Separ fuel filter/water separator with a water alarm on the feed line to the engine and a single for the diesel generator.

## BOW THRUSTER

- Bow thruster, Max-Power, driven by PTO on diesel generator, Thruster foot button controls at starboard helm

## DIESEL GENERATORS

- Fischer Panda 18NE – 18KVa generator 4800 hours - February 2017
- Northern Lights 4KVa generator with 480 hours - February 2017

## HYDRAULIC SYSTEM

- Bosch-Rexroth custom designed system to supply all hydraulic functions quietly and smoothly, eliminating any inherent hydraulic noise. Supplies Reckman genoa furler, anchor windlass and boom vang.

## PNEUMATIC SYSTEM

- One Thompson 24V low pressure (6 bar) piston compressor with quick acting couplings in the lazarette for the transom door air seal.

## PLUMBING SYSTEMS

### FRESH WATER SYSTEM

- Water capacity 900 ltr (238 USg), in two stainless tanks
- Pressurized hot/cold fresh water system supplied via 2x Amfa A95 24V pumps
- Hot and cold water distributed to all heads, to the galley and to the deck shower
- Single lever mixing faucets for the washbasins, galley sinks, and showers
- Deck shower on bathing platform.
- 2 x 60L hot water heaters. Hot water can be heated via engine cooling water or AC heating element
- Quooker ST, 1600 W, 230 V, installed in galley
- Fresh water connection to deck wash

## WATER MAKER

- Sea Recovery 60 GPH 220/50hz

## VENTILATION SYSTEM

- Condaria reverse-cycle air conditioning system with 2x compressors and fan coils in all cabins
- Eberspacher diesel heating system
- The yacht is equipped with forced ventilation to all cabins
- Battery boxes and bilges have independent extraction

## GREY WATER SYSTEM

- Grey water is collected in sump tanks in each head and pumped overboard via electric pump

## BLACK WATER SYSTEM

- Tecma Silence 24v WC in each head, all fresh water flushing. All WC are connected to black water tank, no possibility to flush toilets direct over board. Two stainless steel black water tanks 2 x 110trs (29 USg) each The tanks can be emptied by 24 V electrical pumps to seacock via siphon breaks. Each tank is also provided with a deck suction line.

## BILGE PUMP SYSTEMS

- There are five separate bilges, i.e. fore peak, FWD cabins, engine room, AFT cabins and lazarette bilge. Three manual Whale Titan 100 ltr/min (26 US gallons) as back-up pumps, one for fore peak + FWD cabins, one for AFT cabins and one for engine room and lazarette bilge.
- Automatic electric bilge pumps in forepeak and saloon

## ELECTRICAL SYSTEM

## DC SYSTEM

- Service batteries 24v 1200 Ah/5 hour rating, equals 1440 Ah 20 h rating
- Radio batterie s24 V 240 Ah/5 h rating, equals 290Ah 20h rating, with 50 A battery charger, including service/radio battery parallel switch - direct and with paralleling diode.
- Starting batteries 50 Ah 24 V for engine, and 50 Ah 24 V for generator. New 2013
- Paralleling button for main engine starting and diesel generator starting batteries.

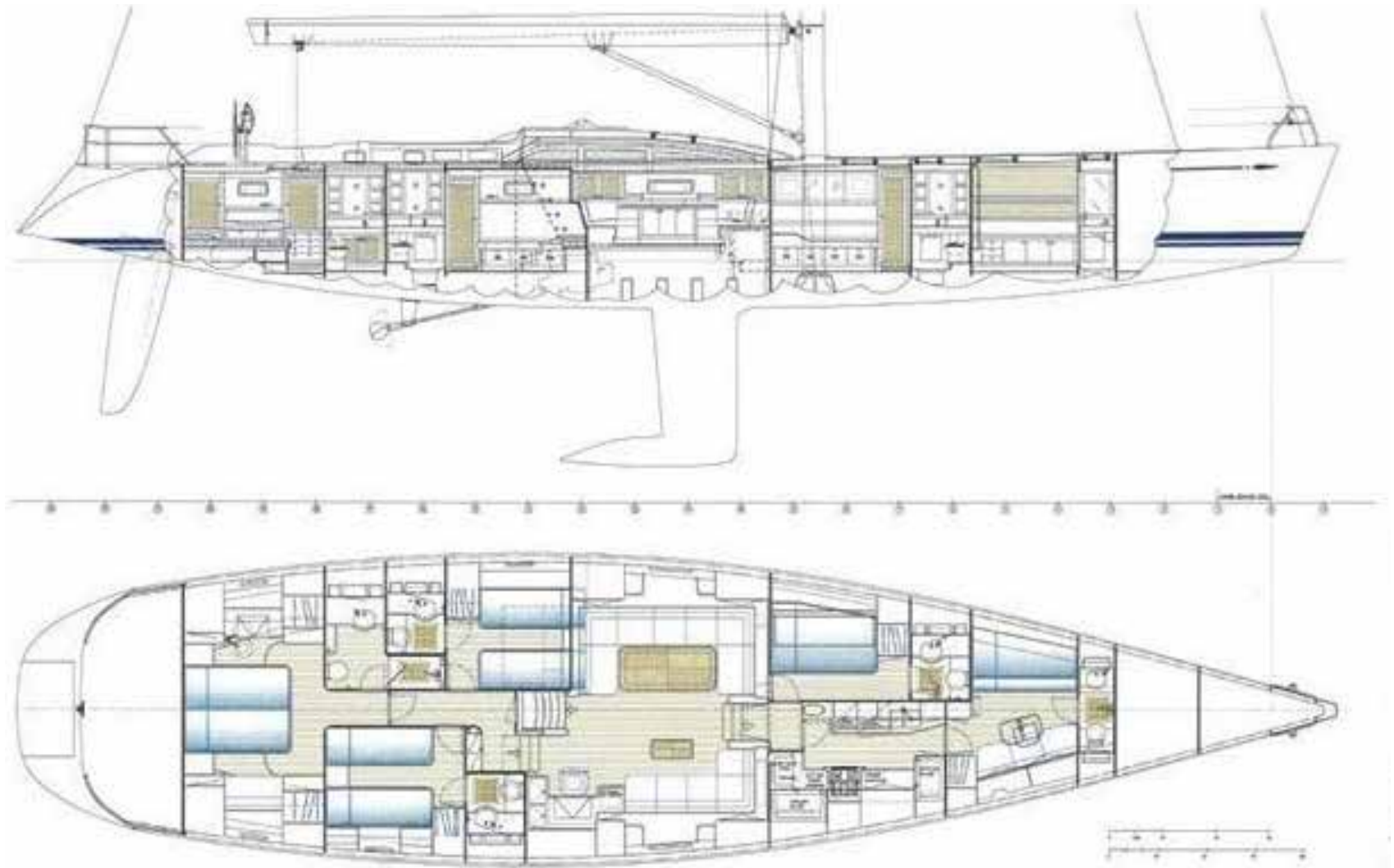
## AC SYSTEM

- Shore Power
- Connections for both 110v and 220v (USA or EU)
- A 6kVA transformer is used for the shore power in USA. Separate shore inlet for air conditioning.

## CHARGERS/INVERTERS

- Two Mastervolt Mass 24 V 75 A for service batteries
- One Mass 24V 50A for the radio batteries
- One 24V 140A Bosch service alternator on main engine for service and radio battery charging
- Mastervolt inverter 24/2500 VA for for general service
- Mastervolt radio battery 24/1500 VA for instruments and entertainment

# LAYOUT



SEDNA



**Ancasta Yachts Hamble**

T. +44 (0)2380 450 000

E. [hamble@ancastayachts.com](mailto:hamble@ancastayachts.com)

**Ancasta Yachts London**

T. +44 (0)2075 846 285

E. [london@ancastayachts.com](mailto:london@ancastayachts.com)

**Ancasta Yachts Palma**

T. +34 971 719678

E. [palma@ancastayachts.com](mailto:palma@ancastayachts.com)

[www.ancastayachts.com](http://www.ancastayachts.com)