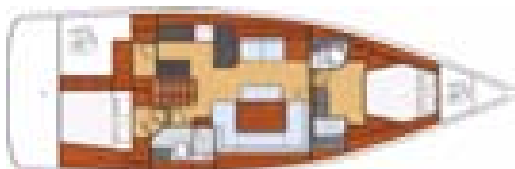


3 cabins - 2 head compartments



2 cabins - 2 head compartments



4 cabins - 2 head compartments

## GENERAL SPECIFICATIONS

• L.O.A	14,60 m	47'11"
• Hull length	14,27 m	46'10"
• L.W.L.	13,86 m	45'6"
• Beam	4,74 m	15'7"
• Deep draught (min)	2,17 m	7'1"
• Deep ballast weight	3 550 kg	7,824 lbs
• Shallow draught (min)	1,96 m	6'5"
• Shallow ballast weight	4 060 kg	8,948 lbs
• Air draught (max)	19,53 m	64'1"
• Light displacement	12 594 kg	27,757 lbs
• Fuel capacity (standard)	200 l	53 US Gal
• Fuel capacity (Optional equipment)	200 l	53 US Gal
• Freshwater capacity (standard)	370 l	98 US Gal
• Freshwater capacity (Optional equipment)	320 l	85 US Gal
• Engine power	75 HP	75 HP
	POD 120	POD 120

## ARCHITECT / DESIGNERS

- Naval Architect: Berret Racoupeau Yacht Design
- Interior design: Nauta Design

## EC CERTIFICATE

- Category A - 11 persons
- Category B - 12 persons
- Category C - 14 persons

## STANDARD SAIL LAYOUT AND AREA

• Mainsail (classic)	56,00 m <sup>2</sup>	603 sq ft
• Genoa (105 %)	56,00 m <sup>2</sup>	603 sq ft
• Asymmetric spinnaker	130,00 m <sup>2</sup>	1,400 sq ft
• I	18,75 m	61'6"
• J	6,06 m	19'11"
• P	17,09 m	56'1"
• E	5,55 m	18'3"



## STANDARD EQUIPMENT

### CONSTRUCTION

- Design in accordance with European Directive requirements and according to EC certification
- Monolithic hull design in polyester
- Monolithic structural inner moulding bonded to the hull
- Injection moulded deck in glass fibre/balsa sandwich, covered with «diamond-point» non-slip coating
- Deck hull joint screwed, bonded and banded with 1 solid wood bulwark
- Cast iron keel fixed with bolts and stainless steel backing plates
- Rudder hung with glass compound stock
- White coloured hull - Grey metal hull graphics

### DECK EQUIPMENT

#### RIGGING

- Standard mast 9/10 electro-polished aluminium installed on the deck, 2 aft-swept spreaders
- Anodised aluminium boom
- Discontinuous stainless steel standing rigging
- 2 Backstays with bottlescrews
- Rigid boom vang with tackle
- Genoa furling system with drum on the deck
- 2 Blocks Stand Up on mainsheet arch
- 2 genoa tracks with piston adjusted traveller cars
- 2 Genoa sheet return blocks
- Rigging run back to cockpit (except boom topping lift)
- Complete running rigging: Main halyard, genoa halyard with clutch on mast and cleat, Boom topping lift with cleat on mast, Mainsheet, 2 Genoa sheets 2 rapid reefing lines, 1 manual reef
- 8 Jammers
- 2 halyard bags

#### WINCHES

- 2 Self-tailing genoa sheet winches (H60.2 STC)
- 2 Self tailing coachroof winches (H46.2 STC)
- 2 Aluminium winch handles Speed Grip
- 2 Winch handle boxes

#### SAILS

- Furling genoa with UV protective strip
- Semi full batten written sail with slider and roller slider
- System: Lazy Jack and Lazy Bag in Natural colour

#### MOORING LINES - MOORING

- Self-bailing chain locker - Clench bolt - Hatch cover
- Stainless steel bow fitting 2 rollers
- 12 V - 1500 W Vertical electrical windlass - Remote control
- 6 Aluminium mooring cleats - Stainless steel deck line protection

#### SAIL LOCKER

- Access through deck hatch T60
- Stainless steel ladder
- Shelving

#### SAFETY ON DECK

- 1 Open stainless steel forward pulpit
- 2 Stainless steel aft pushpits
- 1 Lifebuoy support bracket
- 1 Outboard engine bracket
- 1 Flag pole socket
- Double guardrail and stainless steel stanchions - Opening to port and to starboard in guardrail

### COCKPIT

- Self-draining cockpit
- 2 Cockpit locker
- 2 Lockers in cockpit sole beneath helm's feet
- 1 Liferaft locker under helm seat (0,80 m x 0,40 m x 0,58 m / 2'7" x 1'4" x 1'4")
- 1 Gas locker for bottle(s) under the port helm seat
- Natural solid wood slatted cockpit benches
- 2 Steering wheel consoles: Stainless steel steering wheels - 900 mm diameter - leather covered - Steering gear at the helm station - metal cable transmission system - Stainless steel handrail - navigation instrument support (optional instruments) - Glass holder
- 1 Deck hole for access to tiller system + Power supply access hatch
- 1 Tiller
- 2 Steering compass on binacelle
- Portside engine control and control panel
- Polyester cockpit table - 2 flaps - oddments locker - 2 Large storage space - Stainless steel handrail - 12 V socket - lamp with shade
- Cold water cockpit shower hose
- 1 Fixed composite arch - Built-in lighting
- 1 Shore power socket to port
- 2 Hinged PMMA companionway doors - Sliding hatch made of PMMA

### SWIM DECK / STERN DECK

- Fully opening transom, convertible to bathing platform (2,85 m x 0,77 m / 9'4" x 2'6")
- Electrically controlled opening
- Natural solid wood decking on sun deck
- 1 Stainless steel swim/boarding ladder - solid wood steps - folding

### INTERIOR

- Woodwork Alpi Mahogany
- Parquet type laminated floors
- Fabric hull linings in saloon and cabins
- Fabric upholstery
- Marine mattresses in the cabins

### COMPANIONWAY

- Headroom: 1,98 m / 6'6"
- Wooden saloon companionway with moulded wood suspended steps with non-slip surface
- 2 Leather covered stainless steel handrails

### SALOON

- Headroom: 1,98 m / 6'6"
- U shaped saloon bench - double density foam
- Seating on pantograph
- Saloon table in 1 piece - Varnished wood top with inlay - Aluminium legs
- Mirror on bulkhead
- Cupboards - Shelves and stowage along the hull - Storage under bench seats
- Shelves with stainless steel fiddles
- 2 Panoramic deck house windows with concertina blinds
- 2 Hull portholes with curtain
- 2 Opening portholes on coaming in side windows
- 1 Opening deck hatch with blind / Mosquito net

### CHART TABLE - PORT SIDE

- Sliding, can be configured with the armchairs - Placed against the forward bulkhead, against the galley or between the 2 mobile seats
- Table with flap - Moulded wood fiddle
- Switch panel on bulkhead for access to electrical functions
- Navigation instrument panel (without instruments)
- 1 White reading light / Red

## GALLEY - PORT SIDE

- Headroom: 1,90 m / 6'3"
- L-shaped galley with separate sink located below companionway
- Compact grey laminated worktop
- 1 Stainless steel sink 2 rectangular basins - 1 Mixer tap cold water / hot water, under pressure
- 1 Gas cooker 2 burners - Stainless steel oven on mountings - Stainless steel protection handrail
- 1 12 V 100 litre ice box / 26 US Gal, top opening
- 1 12 V 130 litre refrigerator / 34 US Gal, front opening
- Fitted lockers and closed shelving (Shelving, Bin)
- 1 Base cabinet: 1 Drawer - 2 shelves
- Storage space along the hull
- 2 Opening ports on coaming with curtains on side windows

## FORWARD CABIN

- Headroom: 1,92 m / 6'4"
- Central double bed (2,09 m x 1,55 m x 1,18 m / 6'10" x 5'1" x 3'10")
- Hanger closets - Valet tray - Cubby hole locker - Base cabinet - Storage space under bed
- 2 flush deck hatches with blinds / Mosquito net
- 2 Hull portholes with curtain

## FORE WASHROOM

Completely built in to the cabin with:

### TO STARBOARD

- Moulded basin in grey work surface, Mixer tap hot water / Cold water
- 1 Bathroom storage cabinet
- 1 Mirror
- 1 Glass shower cabin with flush access and stowage on the bulkhead
- 1 flush deck hatch with blind / Mosquito net

### TO PORT

- Separate WC
- Storage space along the hull
- 1 flush deck hatch with blind / Mosquito net

## STARBOARD AFT HEAD COMPARTMENT

- Headroom: 1,92 m / 6'4"
- Access through saloon and the starboard aft cabin
- Separate shower - 1 Mixer tap hot water / Cold water - Stowage on bulkhead
- 1 Manual marine toilet
- 1 Rigid holding tank 64L / 17 US Gal
- Basin - 1 Mixer tap hot water / Cold water
- 2 Mirrors
- Toilet accessories
- 1 Opening portlight with curtains in side windows in the coaming

## STARBOARD AFT CABIN

- Headroom: 1,86 m / 6'1"
- 1 Double bed (2,09 m x 1,18 m x 1,55 m / 6'10" x 3'10" x 5'1")
- Access door to starboard aft washroom
- Cupboards, Hanging locker, Closed shelving, Stowage on both sides of berth
- 1 Large size hull port with curtain
- 1 Opening deck hatch with blind / Mosquito net
- 1 Opening cockpit port with curtain
- 1 Glazing on companionway bulkhead

## Version 2 cabins, 2 head compartments

### AFT-GALLEY - PORT SIDE

- Headroom: 1,90 m / 6'3"
- Closed galley aft, accessible through galley
- Cupboards, shelves
- Dedicated position for a 5 kg washer drier (optional)
- 1 Opening deck hatch with blind / Mosquito net
- Direct access to cockpit locker (Port side)

## Version 3 cabins, 2 head compartments

### PORT AFT CABIN

- Headroom: 1,86 m / 6'1"
- 1 Double bed (2,05 m x 1,35 m x 1,55 m / 6'9" x 4'5" x 5'1")
- Cupboards, Hanging locker, Closed shelving
- 1 Large size hull port with curtain
- 1 Opening deck hatch with blind / Mosquito net
- 1 Opening cockpit port with curtain
- 1 Glazing on companionway bulkhead

## Version 4 cabins, 2 head compartments

The saloon is to port, with a large U-shaped galley facing it to starboard. The chart table and modulable seats disappear.  
aft: 2 cabins + 1 Starboard side cabin, 1 Port aft head compartment.

## ENGINE

- Engine Yanmar Diesel 75 hp / 75 HP Sail Drive or POD 120 Dock & Go
- Engine control - Control panel in the port cockpit
- Engine compartment: Soundproofing foam - Ventilation: 1 air intake and 1 pressured air outlet
- 1 Alternator 12 V / 80 Ah
- 1 Rotomoulded diesel tank 200 L / 53 US Gal (under port aft berth) - Electronic gauge - Low level alarm - 1 Deck filler
- Filters: Sea water - Diesel - Decanter
- Fixed three blades propeller
- 1 Engine access through companionway (opening with 2 gas struts) - 2 Engine access through aft cabins

## ELECTRICITY

- 12 V circuit
- 2 service batteries (140 Ah) - 1 Engine battery (110 Ah)
- 1 Power distributor
- 12 V Electrical panel (Fuses - Voltmeter - Water gauge - Fuel gauge - Battery warning - Fuel warning - Water warning)
- 1 12 V Sockets
- Lighting: Overhead lights - Reading lights - Reading light White/red - White strip-lighting
- Navigation lights: 1 Forward and aft navigation lights - 1 Engine navigation light / Spreader light forward of mast - 1 Anchor light on masthead
- Wire runs for options cables
- Full 220 V system (Interior sockets 220 V, 40 Amperes battery charger, Shore power socket)

## PLUMBING

- 1 rotomoulded freshwater tank (330 l / 87 US Gal Forward cabin) - 2 Deck fillers - Separate tank filling - Tank selection with ¼ by-pass valves
- Pressurised electric water pump - Expansion tank - Inline filter
- 40 L Electric water heater / 11 US Gal (engine run)
- 1 Rigid holding tank 64L / 17 US Gal
- Delayed shower draining and electric shower drain pumps
- 1 Electric bilge pump - 1 Manual bilge pump
- 1 Electric ice box drain pump

## GAS

- 1 Gas bottle box in the cockpit (Diameter 0,34 m x 0,53 m / 1'1" x 1'9")
- Regulator and safety tap

## TRIM LEVEL

	AVANTAGE	ELEGANCE
B&G Electronic - Helm consoles to port and starboard : 1 Multifunction screen Zeus T7 (GPS - Chart plotter - Chart reader - Without chart - Cartography Navionics Silver included)	■	■
B&G Electronic : Wind Sensor (Windvane, Anemometer)	■	■
B&G Electronic : Sensor (Loch - Speedometer - Temperature)	■	■
B&G Electronic : Wifi interface	■	■
Cockpit sole natural solid wood	■	■
Galley: Sea water foot pump + Fresh water	■	■
Galley: Top opening 12 V cool box in ice box - Freezer	■	■
LED: Navigation light - Interior lighting	■	■
Saloon & Cabins: Indirect lighting LED	■	■
Cockpit shower hot - Cold water	■	■
Additional diesel tank (200 l / 53 US Gal)	■	■
SonicHub (Radio, Dock IPHONE <sup>®</sup> , USB) - Interior loudspeakers - Exterior loudspeakers	■	■
2 140 amperes additional service batteries + 1 40 Amperes battery charger additional	■	■
Releasable fore-stay chain-plate		■
1 Port electric coachroof winch H46.2 STCE UNIPOWER		■
Polyester/wood cockpit table - White PVC protective cover		■
Galley: Stainless steel 3 burner oven/grill cooker on deluxe mounting		■

## PACKS

	DOCKING	EASY DOCKING	ELECTRONIC B&G
Windlass control in cockpit with chain counter	■	■	
White PVC steering wheel covers	■	■	
Moorings lines, Mooring, Fenders	■	■	
Bow thruster		■	
Swivel base on reverse side of cockpit table			■
Cockpit: Multifunction color touchscreen B&G Zeus T12 LED 12" (GPS, Chart plotter, Chart reader - Without chart - Cartography Navionics Silver included)			■

## VERSION

	DOCK & GO
Engine YANMAR Diesel Dock & Go POD 120	■
Swivel Sail Drive base	■
Joystick	■
Vessel Management Unit (VMU)	■
Bow thruster	■
Auto pilot	■

## OPTIONS

---

### Navigation electronics B&G

- 4G Radar
- Auto pilot AC 42
- Zeus T7 additional multifonction screen - Chart table
- WR 20 Wireless autopilot remote control
- Fixed RS35 VHF, function AIS receiver - Chart table + Wireless receiver
- AIS 400

### Rigging - Sails

- 2 flag halyards
- Asymmetric spinnaker gear
- Code 0 on furler
- Tacking jib
- Removable forestay
- Anodised mast furling system with mainsail
- Easy Sail (Genoa traveller adjustment from cockpit, Clutches on genoa sheet blocks, Backstay adjustment \*)

### Winches

- 2 Electric genoa sheet winches H 60.2 STCEH

### Hull - Deck

- Blue-grey hull
- Solid wood slatted catwalks
- Silver Coachroof sprayhood
- Silver Cockpit Bimini
- Silver Cockpit cushions
- 3 retractable blades propeller
- Refrigerated ice-box in cockpit table (30 L / 8 US Gal) - Positive cold
- Windex Windvane
- White composite steering wheel
- Folding removable gangway
- Stainless steel Arch with davits

### Interior equipment

- Water maker 60 l / 16 US Gal/h
- 6 KVA 220 V / 50 Hz ONAN Generator - with cocoon
- Dishwasher
- 220v air conditioning
- Forced air heating fuel
- Microwave oven
- Double berth in saloon
- Slat mattresses
- Additional holding tank
- QUIET FLUSH electric toilet
- Extra water tank 2 x 160 L / 2 x 42 US Gal
- TV LCD 26" + DVD/MP3 player in the saloon
- TV LCD 26" + DVD and MP3 player in master cabin
- Mosquito nets to port
- Inverter 12V / 220V 2000VA
- Grey upholstery padding in all cabins or Taupe
- De luxe folding saloon table (double berth compatible)
- Light white laminate floors

\* *Except on mast with in-mast furling*

