

SUPERYACHT

SANLORENZO

52
STE
EL/









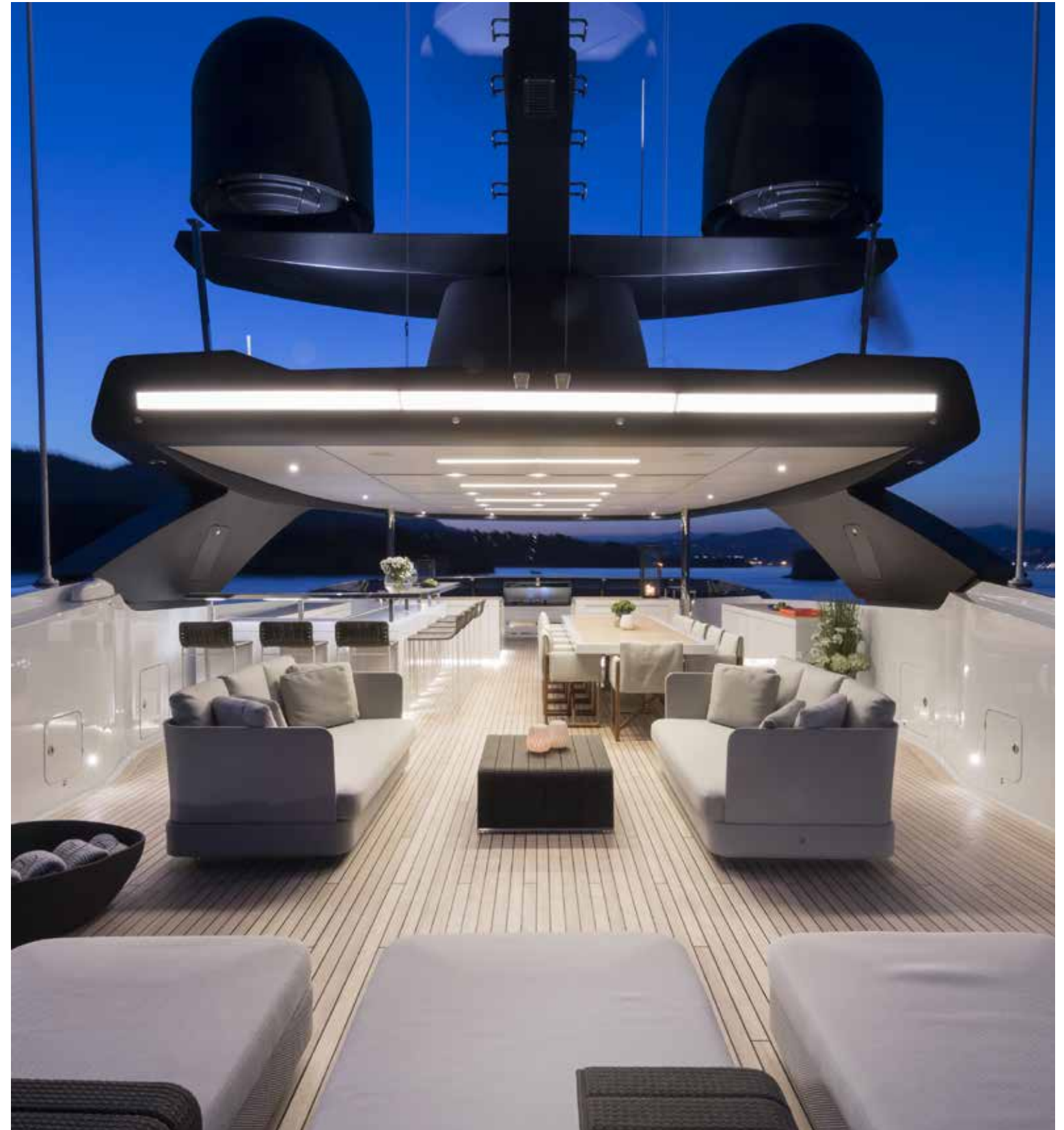






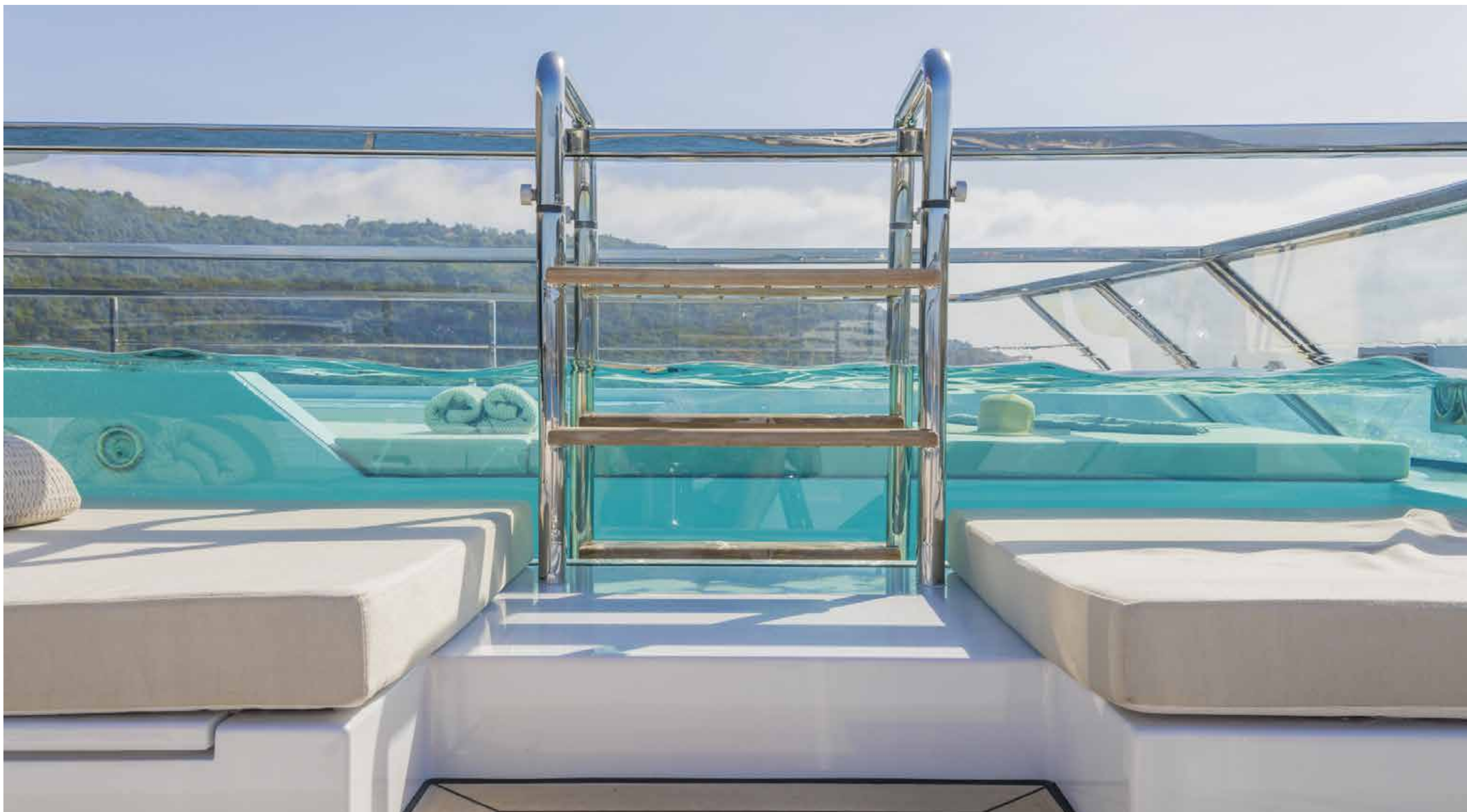
















15. Main deck salon



16. Main deck salon



17. Main deck salon



18. Main deck salon

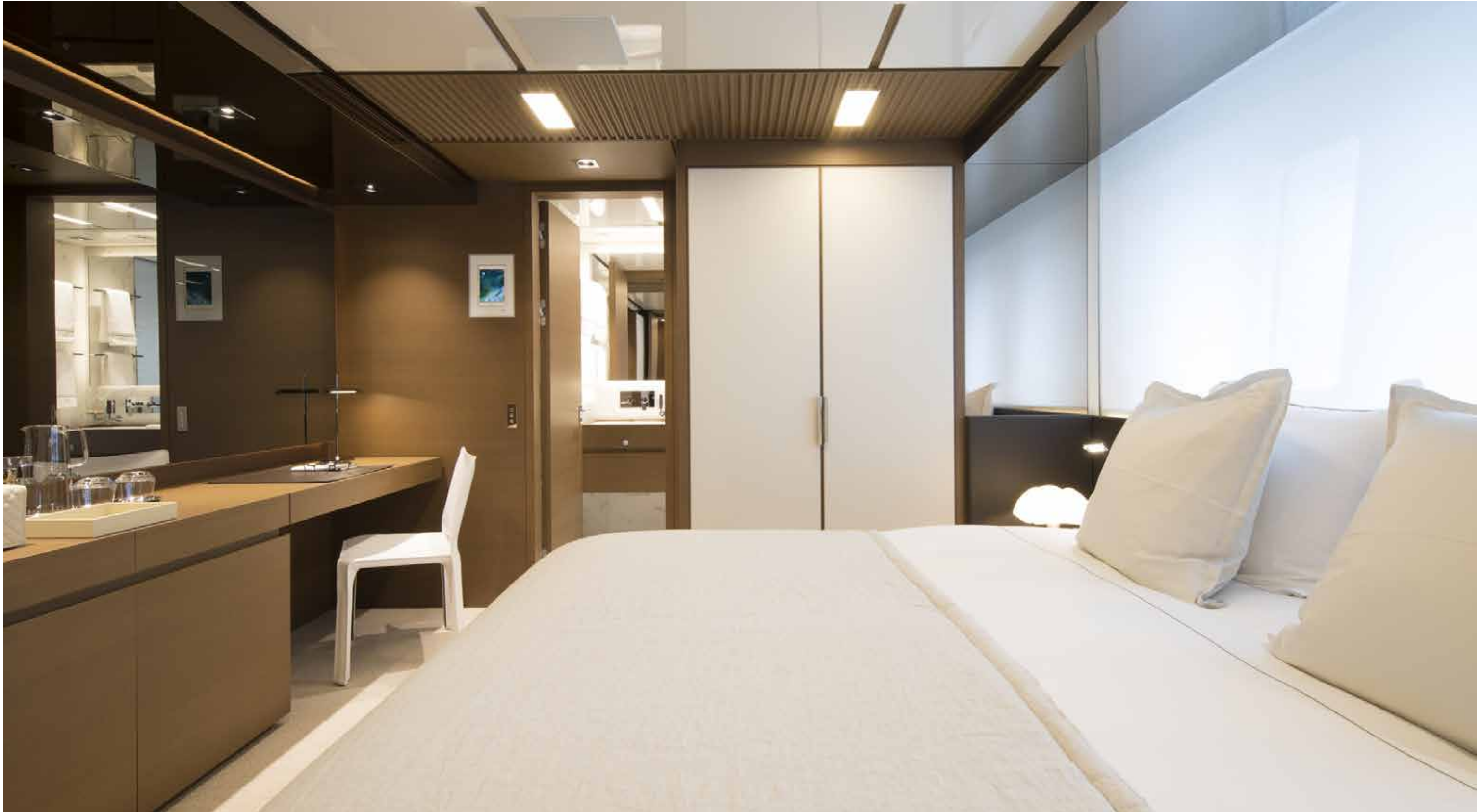


19. Owner's cabin



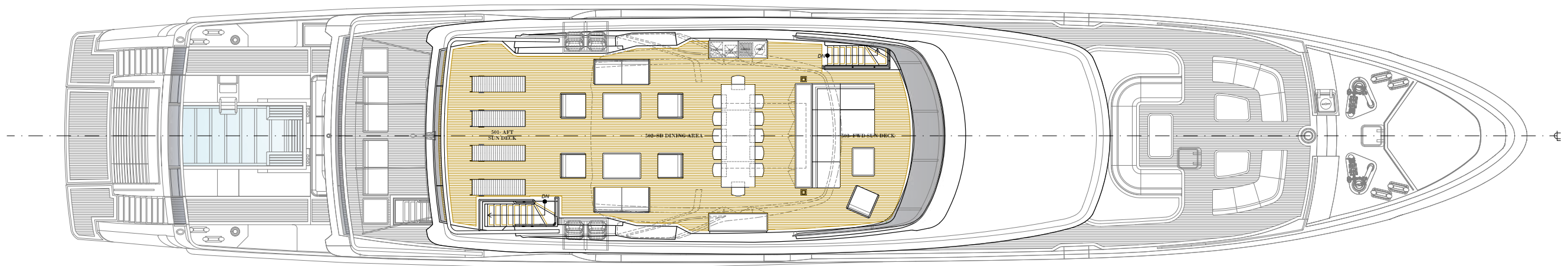


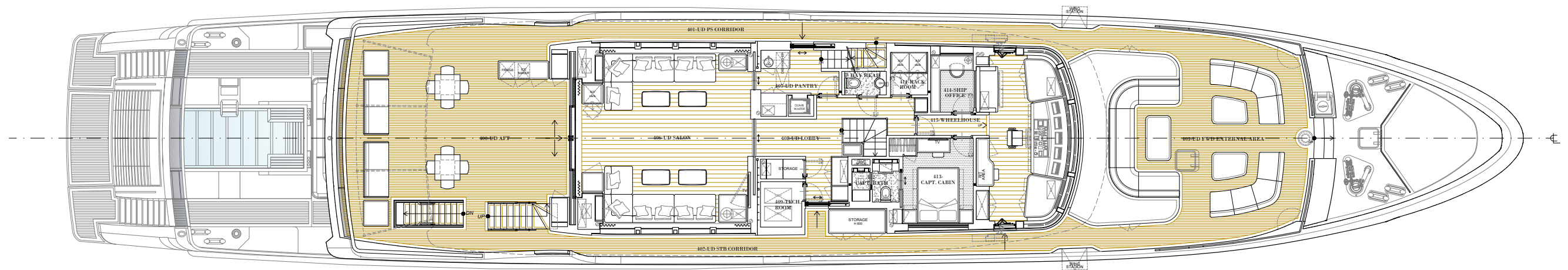
21. Owner's bathroom

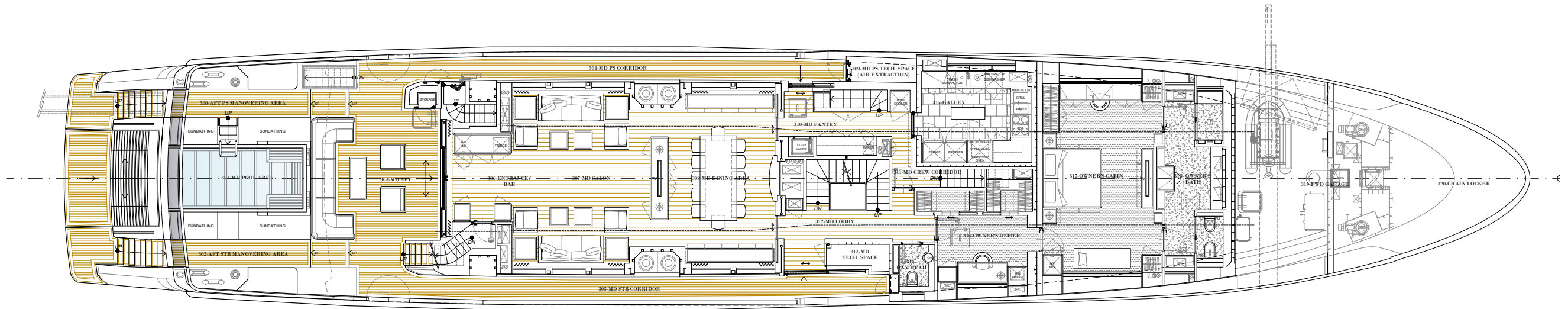


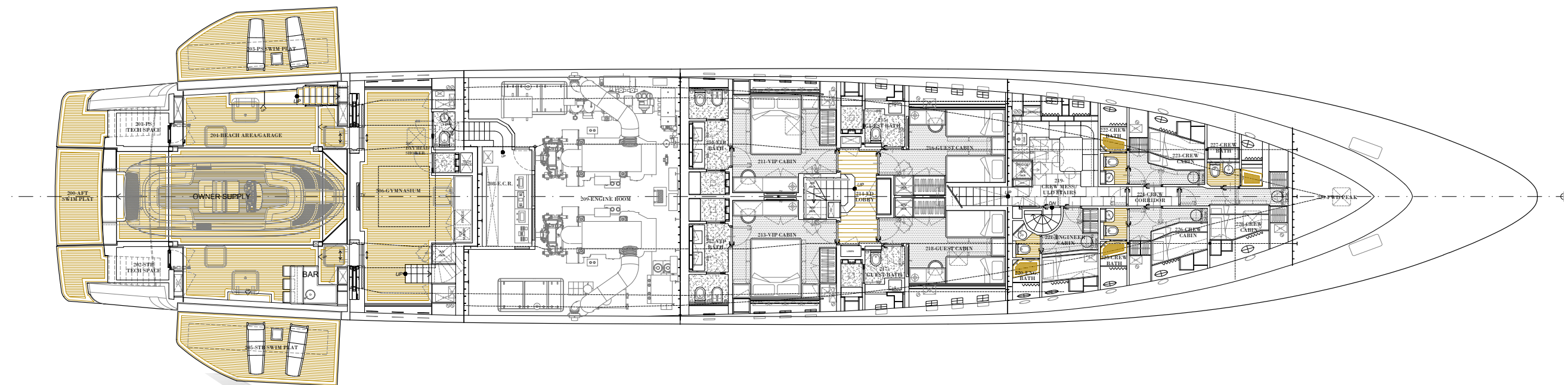
22. VIP cabin

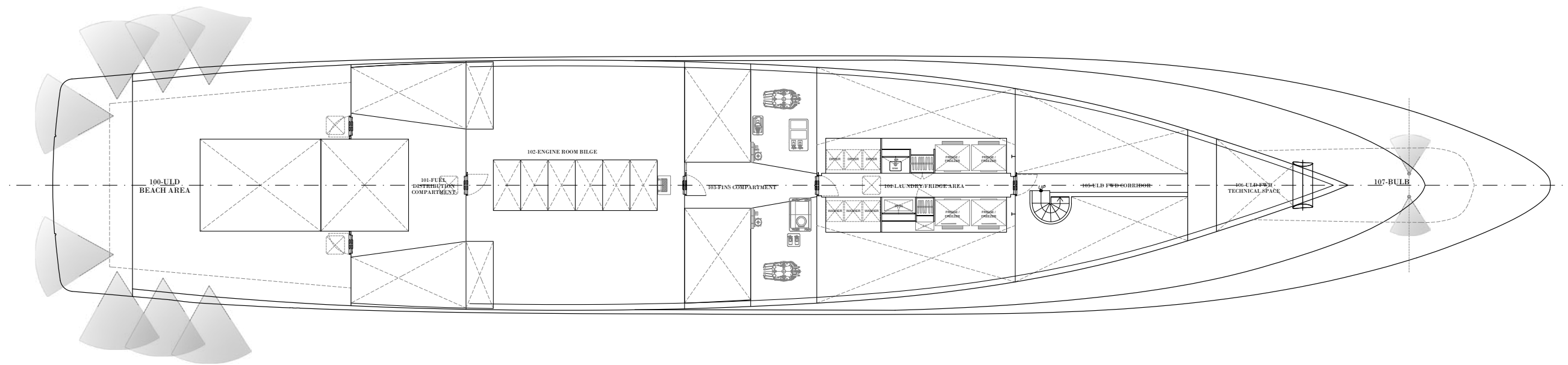












Length Overall	52 m
Maximum beam	9.35 m
Draught @ full load	2.90 m
Gross Tonnage	< 500 GT
Hull	Steel
Superstructure	Aluminium
Guest Accommodation	12 people
Crew Accommodation	9 people
Engines	2 x CAT 3,512C (2 x 1,500 kW)
Gensets	2 x 118 kW
Maximum Speed (approx.) (*)	16 knots
Comfort Speed (approx.) (*)	12 knots
Economical speed (approx) (*)	11 knots
Max range @ economical speed (approx.)	4,000 nm
Fuel capacity	55,000 lt

*Technical data refer to a yacht with standard layout as described in the sales specification

This brochure shall not be regarded as a contractual offer regarding the sale of yachts from the shipyard to individuals or companies. All the information contained in this brochure, including without limitation any technical or performance data, pictures, and drawings, are mere indications with no contractual value and refer to standard motoryacht models from the shipyard on the date the brochure is issued.

This document is based on the information available at the time it is published.
In spite of the commitment aimed at guaranteeing maximum possible accuracy, the information contained herein may not cover all the details and any technical-commercial modifications introduced after printing, or may describe features that are not present.