



YACHT

**SANLORENZO**

SL  
106/A

# SL 106/A



# SL 106/A





SL  
106/A



# SL 106/A





# SL 106/A





# SL 106/A



# SL 106/A





SL  
106/A



# SL 106/A





# SL 106/A





# SL 106/A



SL  
106/Δ

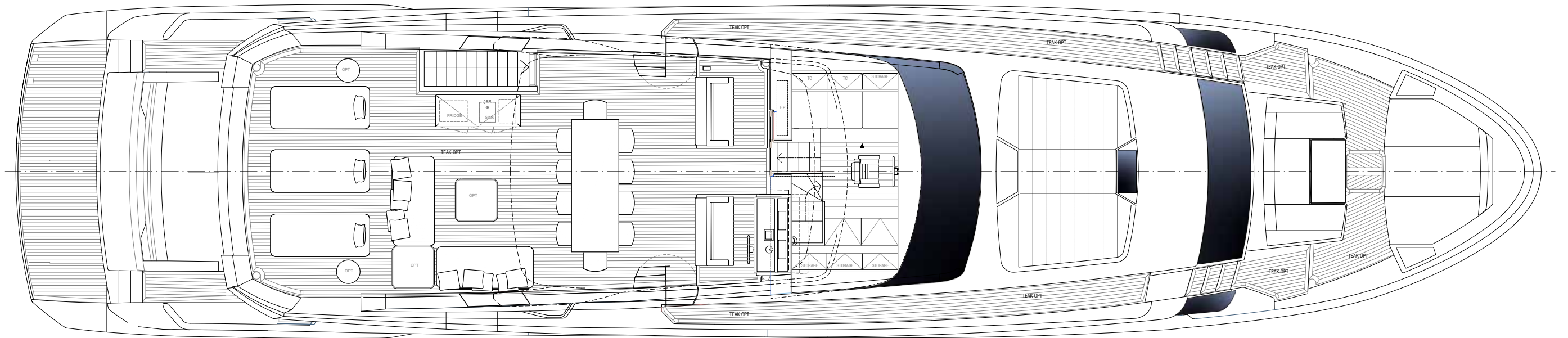


# SL 106/A

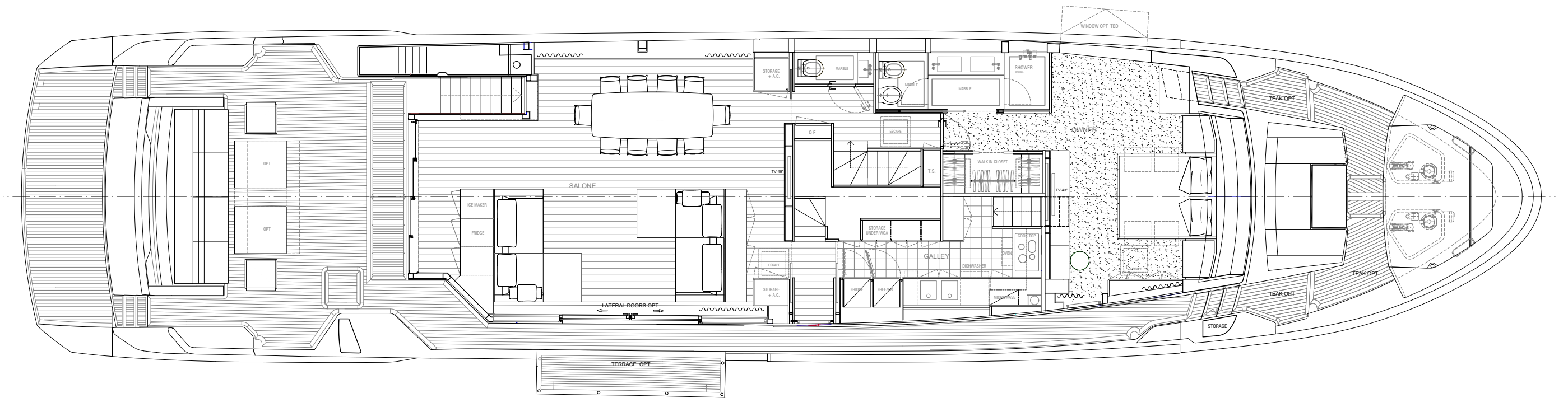


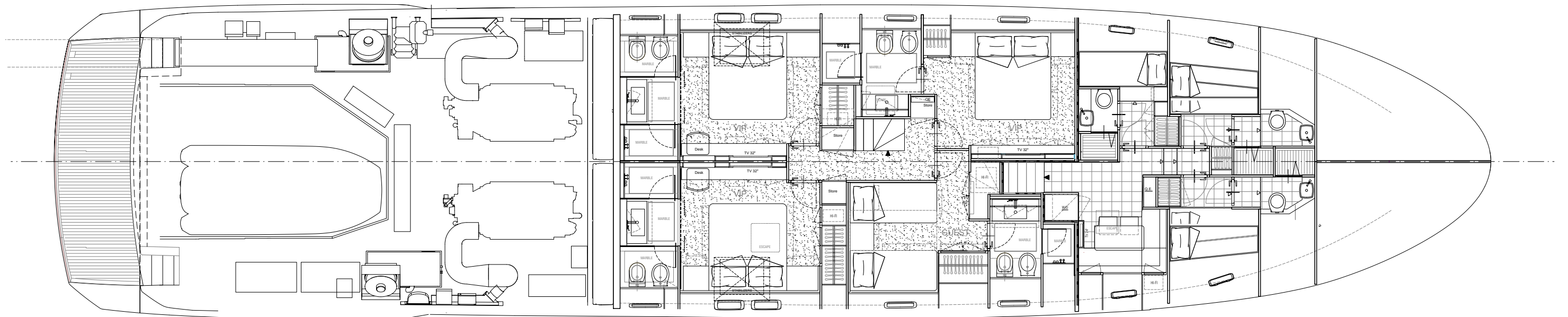


# SL 106/A



SL  
106/A



SL  
106/A

# SL 106/A

Length overall	32,28 m
Maximum beam	7,06 m
Construction height	3,22 m
Displacement @ half load (*)	118 t
Displacement @ full load (*)	126 t
Waterline length @ half load	26.58 m
Waterline length @ full load	26.65 m
Draught @ half load	1,93 m
Draught @ full load	2,00 m
Guest accommodation	10 people
Crew accommodation	5 people
Engine	2 x MTU 16V2000M96 - 2434 HP
Consumption (approx.) (**)	2 x 375 l/h @ 2200 rpm
Power output @ 100% MCR (**)	2 x 1790 kw @ 2450 rpm
Gearbox	2 x ZF 3060A - i = 3,00 :1
Transmission	Direct shaft line
Propeller	5 blades NiBrAl “S” class
Shafts	Aquamet 17 or equivalent
Gensets	2 x 45 kW
Rudders	AISI 316 stainless steel
Maximum speed (approx.) (***)	28 kn
Cruising speed (approx.) (***)	24 kn
Economical speed (approx.) (***)	10 kn
Max range @ economical speed (approx.)	1280 nm
Deadrise	16°
A/C power	180000 btu/h
Fuel capacity	12100 l
Fresh water capacity	1900 l
Black water capacity	900 l
Grey water capacity	850 l
Tender length	max 4,50 m
Tender weight	840 kg

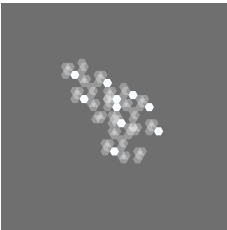
\* Displacement data refers to a yacht with standard layout as described in the sales specification  
\*\* Main engine performance data and characteristics are derived from the manufacturer's specification  
\*\*\*Speed data refer to a yacht with standard layout as described in the sales specification, considering a third of liquid weight, a third of luggage weight (25kg per bed) and 5 crew members (80kg each).



It's not an investment if it's destroying the planet



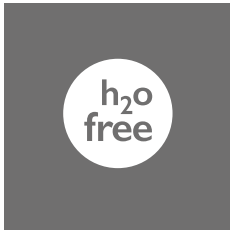
INFUSION  
LAYUP SYSTEM



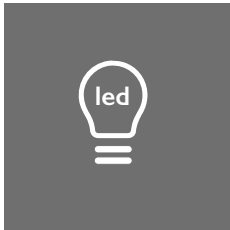
BIO RESIN  
&CORE



FSC CERTIFIED  
WOOD SUPPLY



FORMALDEHYDE  
FREE FURNITURE



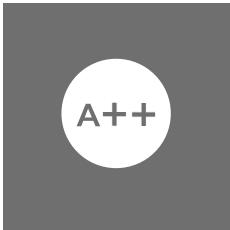
LED  
LIGHTING



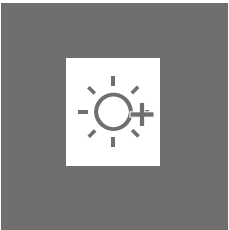
BIOCHROME®



SUSTAINABLE  
LEATHER



CLASS  
A++



SOLAR  
PANELS



HULL  
EFFICIENCY



THERMAL  
INSULATION

This brochure shall not be regarded as a contractual offer regarding the sale of yachts from the shipyard to individuals or companies. All the information contained in this brochure, including without limitation any technical or performance data, pictures, and drawings, are mere indications with no contractual value.

This document is based on the information available at the time it is published. In spite of the commitment aimed at guaranteeing maximum possible accuracy, the information contained herein may not cover all the details and any technical-commercial modifications introduced after printing, or may describe features that are not present.