

YACHT

SANLORENZO

SL
90/A

SL
90/A



SL
90/A



SL
90/A



SL
90/A



SL
90/A



SL
90/A



SL
90/A



SL
90/A



SL
90/A



SL
90/A



SL
90/A



SL
90/A



SL
90/A



SL
90/A



SL
90/A



SL
90/A





SL
90/A



18. Owner's cabin

SL90/ ASYMMETRIC

SL
90/A



19. Owner's cabin

SL90/ ASYMMETRIC

SL
90/A



SL
90/A



21. Owner's bathroom

SL90/ ASYMMETRIC



SL
90/A



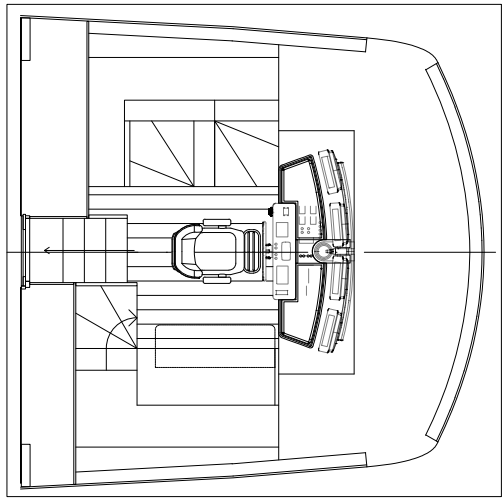
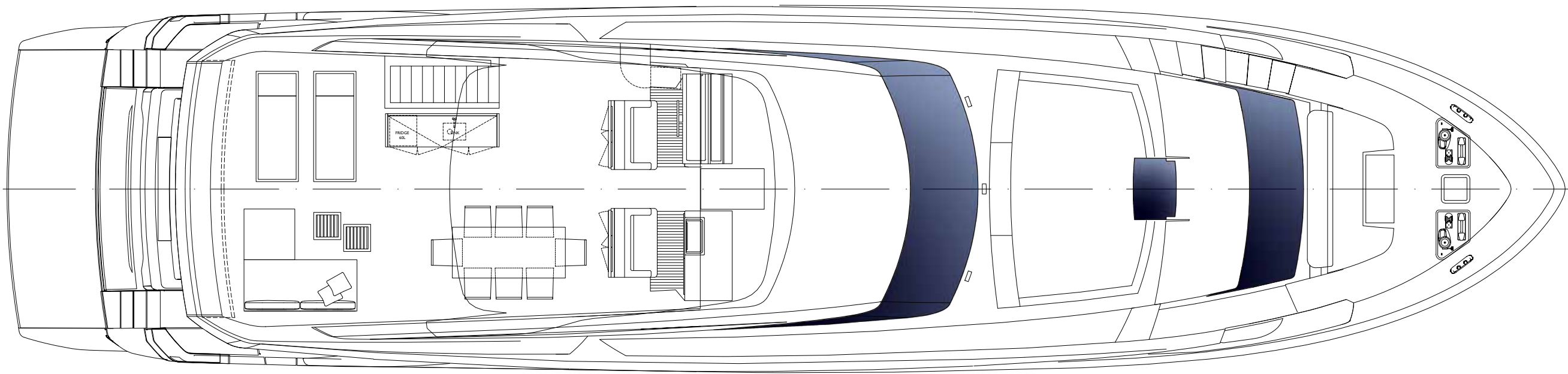
23. Vip cabin

SL90/ ASYMMETRIC

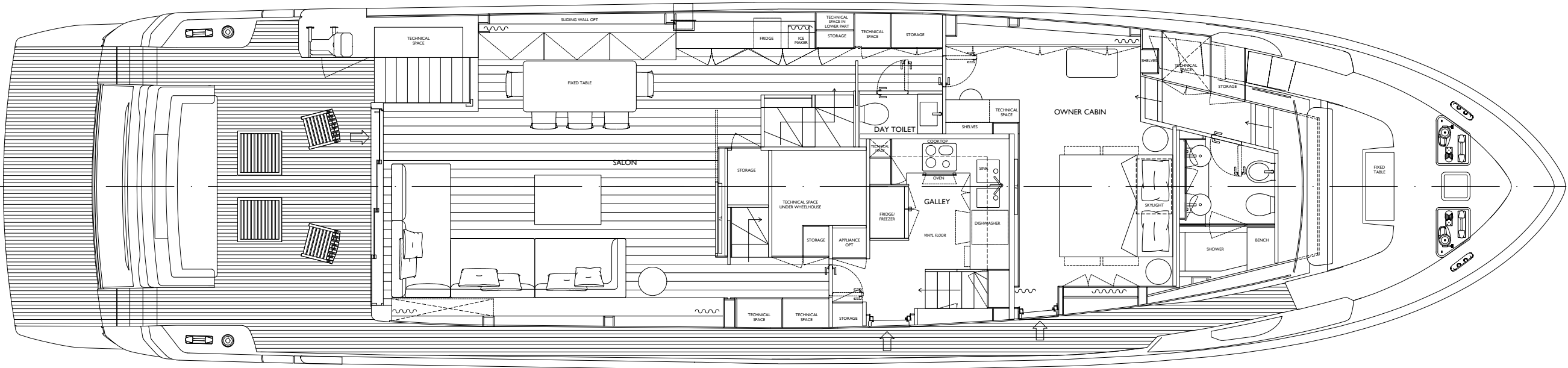
SL
90/A

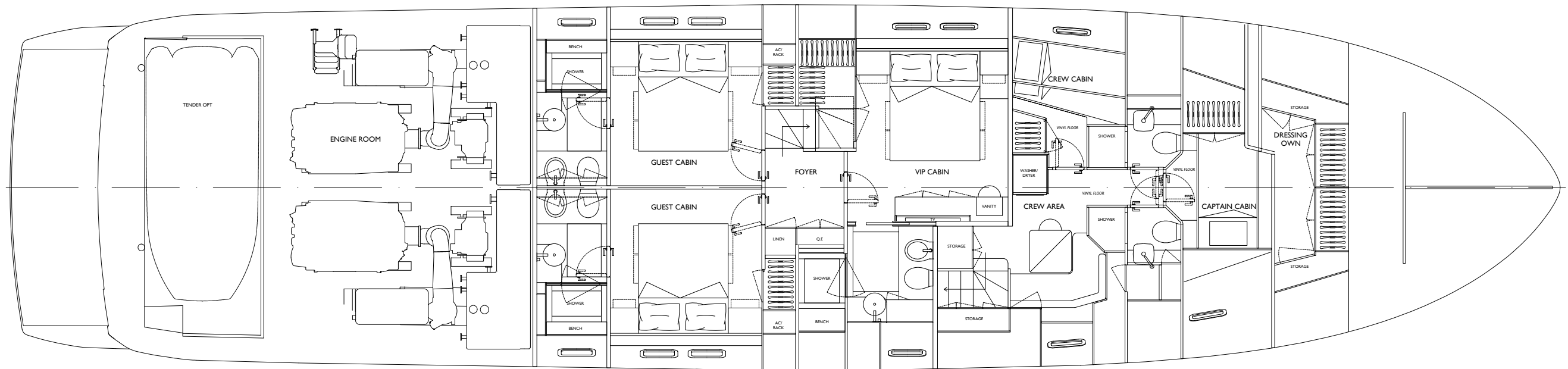






Wheelhouse





Length overall	27,60 m
Maximum beam	6.50 m
Construction height	2.96 m
Displacement @ half load (*)	95 t
Displacement @ full load (*)	101 t
Waterline length @ half load	22.65 m
Waterline length @ full load	22.68 m
Draught @ half load	1,87 m
Draught @ full load	1.93 m
Guest accommodation	8 people
Crew accommodation	3 people
Engine	2 x MTU 12V2000M96L - 1947 HP
Consumption (approx.) (**)	2 x 284 l/h @ 2200 rpm
Power output @ 100% MCR (**)	2 x 1432 kw @ 2450 rpm
Gearbox	2 x ZF 3055V – i = 3,00 :1
Transmission	V-Drive
Propeller	4 blades NiBrAl “S” class
Shafts	Aquamet 17 or equivalent
Gensets	1 x 28 kW + 1 x 35 kW
Rudders	AISI 316 stainless steel
Maximum speed (approx.) (***)	29 kn
Cruising speed (approx.) (***)	25 kn
Economical speed (approx.) (***)	10 kn
Max range @ economical speed (approx.)	1100 nm
Deadrise	15°
A/C power	144000 btu/h
Fuel capacity	9000 l
Fresh water capacity	1500 l
Black water capacity	1400 l
Grey water capacity	500 l
Tender length	max 4,35 m
Tender weight	600 kg

* Displacement data refers to a yacht with standard layout as described in the sales specification
** Main engine performance data and characteristics are derived from the manufacturer’s specification
***Speed data refer to a yacht with standard layout as described in the sales specification, considering a third of liquid weight, a third of luggage weight (25kg per bed) and 5 crew members (80kg each).

It's not an investment if it's destroying the planet



INFUSION
LAYUP SYSTEM



BIO RESIN
&CORE



FSC CERTIFIED
WOOD SUPPLY



FORMALDEHYDE
FREE FURNITURE



LED
LIGHTING



BIOCHROME®



SUSTAINABLE
LEATHER



CLASS
A++



SOLAR
PANELS



HULL
EFFICIENCY



THERMAL
INSULATION

This brochure shall not be regarded as a contractual offer regarding the sale of yachts from the shipyard to individuals or companies. All the information contained in this brochure, including without limitation any technical or performance data, pictures, and drawings, are mere indications with no contractual value and refer to standard motoryacht models from the shipyard on the date the brochure is issued.

This document is based on the information available at the time it is published.
In spite of the commitment aimed at guaranteeing maximum possible accuracy, the information contained herein may not cover all the details and any technical-commercial modifications introduced after printing, or may describe features that are not present.