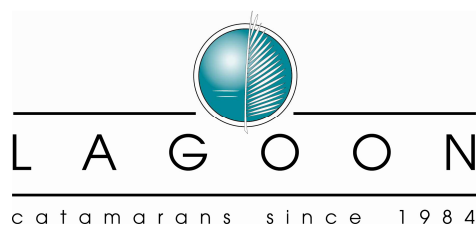


# PROVISIONAL SPECIFICATION

## LAGOON 620

(STANDARD VERSION)





**PROVISIONAL SPECIFICATION LAGOON 620  
(STANDARD VERSION)**



## **STEERING SYSTEM**

### **Standard :**

- 2 foam core spade rudders, stainless steel rudder shaft.
- Epoxy rudder tube.
- Upper and lower self-aligning rudder bearings.
- Full **h**ydraulic steering system with manual pumps on each wheel. 1 hydraulic ram per rudder.

## **PROPULSION**

### **ENGINE & TRANSMISSION**

#### **Standard :**

- 2 Volvo D3-110 HP Diesel engines, 3000 rpm.
- Engine throttles and control panel on port steering station on flybridge
- Straight stainless steel propeller shafts
- 2 fixed propellers
- Engine access through large deck hatch. Stainless steel gas struts on hatches.
- Ventilation system (natural aspiration and forced extraction)
- 1 x 220 V outlet per engine room
- Engine room light
- Sound insulation of engine compartments : foam on bulkhead

### **DIESEL CAPACITY**

- 2 stainless steel fuel tanks : 1300 l total (343 US Gal), under floors forward of the engine room bulkhead.
- Fuel fillers caps and vents on aft cross beam.
- Equipment includes :
  - Electric gauges
  - Fuel filter systems: prefilter with water ~~detector~~ separator and primary filter.

Remote fuel shut off valve in aft cabins.

## **PLUMBING**

### **FRESH WATER**

#### **Standard :**

- Fresh water tanks – 960 l (254 US Gal) total – under cabin floors.
- Fresh water circuit with 2 x 24V pressure pumps (located in engine compartments).
- 2 X 63 liters (17 US Gal) electric water heaters linked to engine heat exchanger.
- 1 transom shower (hot/cold) on each transom.
- 2 water fillers on deck.
- Fresh water dock inlet (port side).

### **GREY WATER**

#### **Standard :**

- Shower and washbasin drain to grey water collection box automatic pump out with float switch.
- Sink drains directly overboard.

### **BLACK WATER**

#### **Standard :**

- 1 holding tank per toilet 73 liters (19 US Gal) with gravity drain to sea.
- Electric TECMA fresh water toilet in each head

### **BILGE PUMP SYSTEM**

#### **Standard :**

- self bailing cockpit following EC regulation
- 1 bilge pump with auto float switch and manual override + bilge level alarm
- 1 manual bilge pump for use from the cockpit.
- 1 bilge pump in each engine room with auto float switch.

## **ELECTRICAL CIRCUITS**

#### **Standard :**

- 220 V AC Circuit :
  - 2 outlets per cabin (owner's cabin : 3), 5 in the saloon, 4 in the galley, one per gangway, 1 per engine compartment, and 1 in the technical compartment
  - 220 V electric panel with power source selector, voltmeter,

- 30 Amp dock inlet in the aft transom with 15m (49' 3" feet) shore power cord.
- 24 V circuit :
  - 24 V 420 Ah gel service battery bank
  - 24V starting gel battery per engine
  - 24 V electrical panel with battery bank monitor
  - Breaker-box for the 24V system
  - 2 engine driven 110 Ah 24V Mastervolt alternators

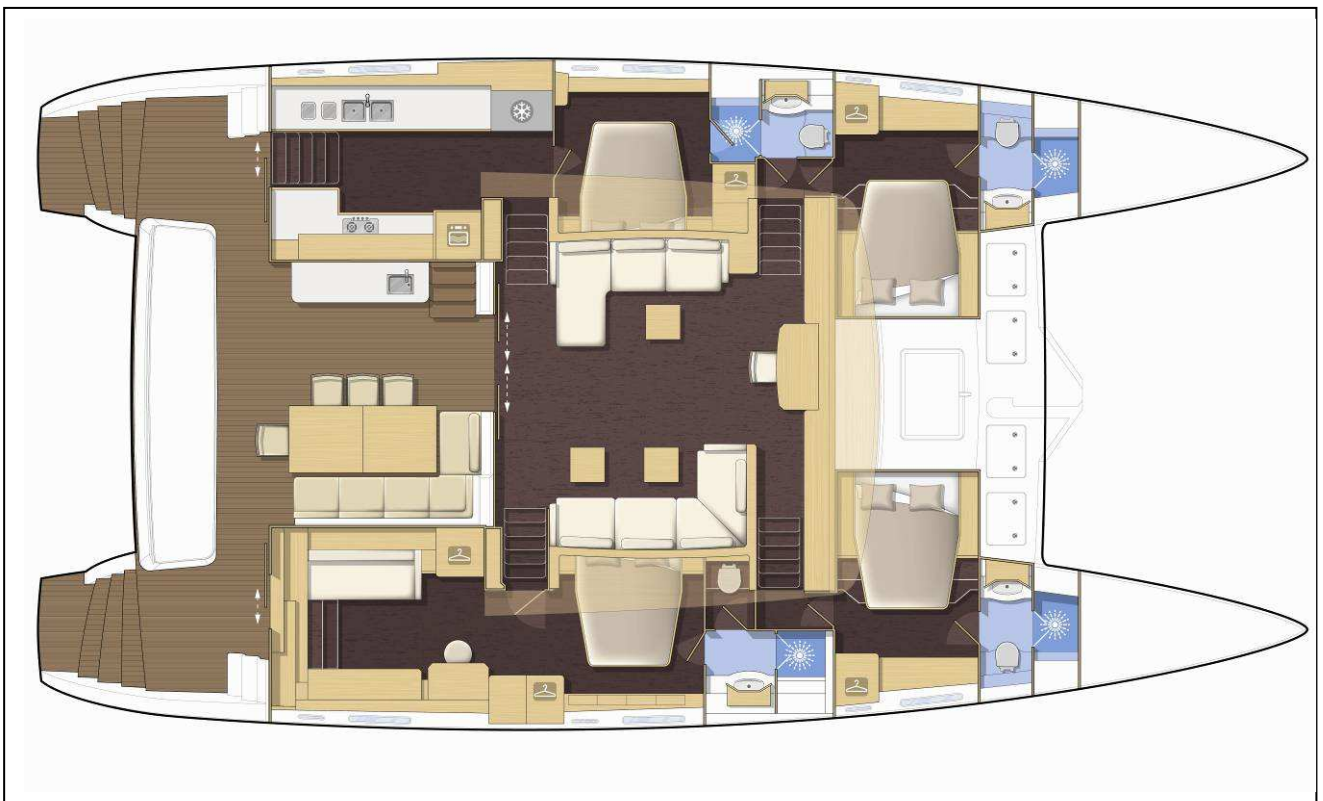
## LAYOUTS

4 CABIN VERSION : Galley down (owner's cabin in starboard hull)

5 CABIN VERSION : Galley down

## DESCRIPTION OF AREAS SIMILAR ON BOTH VERSIONS

### 1- SALOON



- Access from the cockpit through sliding & locking glass door with latching mechanism inside and out. Half way latching points.
- Storage under floorboards with hinged panels and lifting arm
- 4 opening hatches on the front windows.
- Forward window curtains.
- Companionway steps port and stbd on roof bulkhead.
- Companionway steps port and stbd on mast bulkhead.
- Lockers on mast bulkhead including :
  - Dish cupboard.
  - Storage.

#### CHART TABLE:

- Storage locker under chart table.
- 1 seat at chart table.
- Instrument console with panel for electronic equipment.
- Panel with water gauge and navigation lights.
- Main electric panel behind the sliding door on left side of the chart table
- 1 X 220 V outlet.
- 1 X 12 V outlet.

#### PORTSIDE:

- « lazy boy » -style settee for 3 people
- 1 coffee table.
- bar cabinet forward of the settee
  - Storage.
  - Space for flatscreen TV on electric lift (option).
- 1 X 220 V outlet.

#### STARBOARD SIDE:

- Settee for 5 people
- 2 coffee tables convertible to dining tables : telescopic legs
- 4 stand alone chairs.
- 1 X 220 V outlet.

### 2- PORT HULL

#### GALLEY :

- Access from cockpit through sliding glass door and steps.
- Access from the salon through companionway steps.
- 2 opening deck hatches.

#### Outboard side:

- White solid material countertop (Corian White Ice)
- 2 trash cans under countertop.
- 1 double-door side by side fridge/freezer 220V 500l (132 US Gal) with ice maker and build-in 24/220V inverter.
- Dedicated Space for washer/dryer (optional).
- Dedicated Space for dish washer (optional) + upper storage.
- 3 X 220 V outlet.
- Lower storage with shelves.
- 1 opening port hole.
- 1 large one way hull window.
- 1 double stainless steel sink with stainless steel mixer tap

#### Inboard side :

- White solid material countertop (Corian white Ice).
- 4 burner butane stove.
- Electric hood over the stove (option)
- butane oven 52L (14 US gal).
- space for multifunction micro-wave oven (option).
- Upper storage cabinets
- Lower storage cabinets with drawers and shelves
- Ceiling and under cabinet lights

#### PORT AMIDSHIPS CABIN:

- Access from the galley through wooden door
- Queen size bed with side access and wood slats under mattress.
- Upholstered head board
- Bedside storage.
- Underbed storage
- Hanging locker with light and shelves.
- 1 opening port hole.
- Large one way hull window.
- Opaque window curtains.
- Opening deck hatch with mosquito screen and blind.
- Minimum headroom 2.05m (6'9").
- 2 x 220V outlets.
- Upholstered panels on ceiling counter mold.
- General cabin lighting with two way switch by bed side and reading lights.
- Direct access to the bathroom from the cabin through shower. Mirror behind door.

#### BATHROOM PORT AMIDSHIPS CABIN:

- Access to this bathroom from gangway for day head use.
- Solid material countertop (Iro G120) and fiberglass washbasin
- Separate shower stall with plexiglass door.



- Non skid floor in bathroom and shower stall.
- Vanity cabinet and mirror.
- Electrical Tecma fresh water toilet
- Toilet paper holder.
- Soap holder.
- Wall mounted towel holder.
- Headroom 2.05m (6'9").
- Opening deck hatch with mosquito screen and blind.
- 3 spotlights.

#### PORT AMIDSHIPS GANGWAY:

- Storage at bottom of steps.
- 2 lights.

#### PORT FORWARD CABIN :

- Access from the forward companionway through wooden door
- Queen size bed with side access and wood slats under mattress.
- Upholstered head board.
- Underbed storage.
- Bedside storage.
- Hanging locker with light and shelves.
- Storage locker on outboard side.
- 1 opening port hole.
- Large one way hull window.
- Opaque window curtains.
- Opening deck hatch with mosquito screen and blind
- Direct access to the bathroom. Mirror behind door
- Minimum headroom 2.05m (6'9").
- 2 x 220V outlets
- Cabin door with lock
- Upholstered panels on ceiling counter mold.
- General cabin lighting with two way switch by bed side and reading lights.

#### BATHROOM FORWARD PORT CABIN:

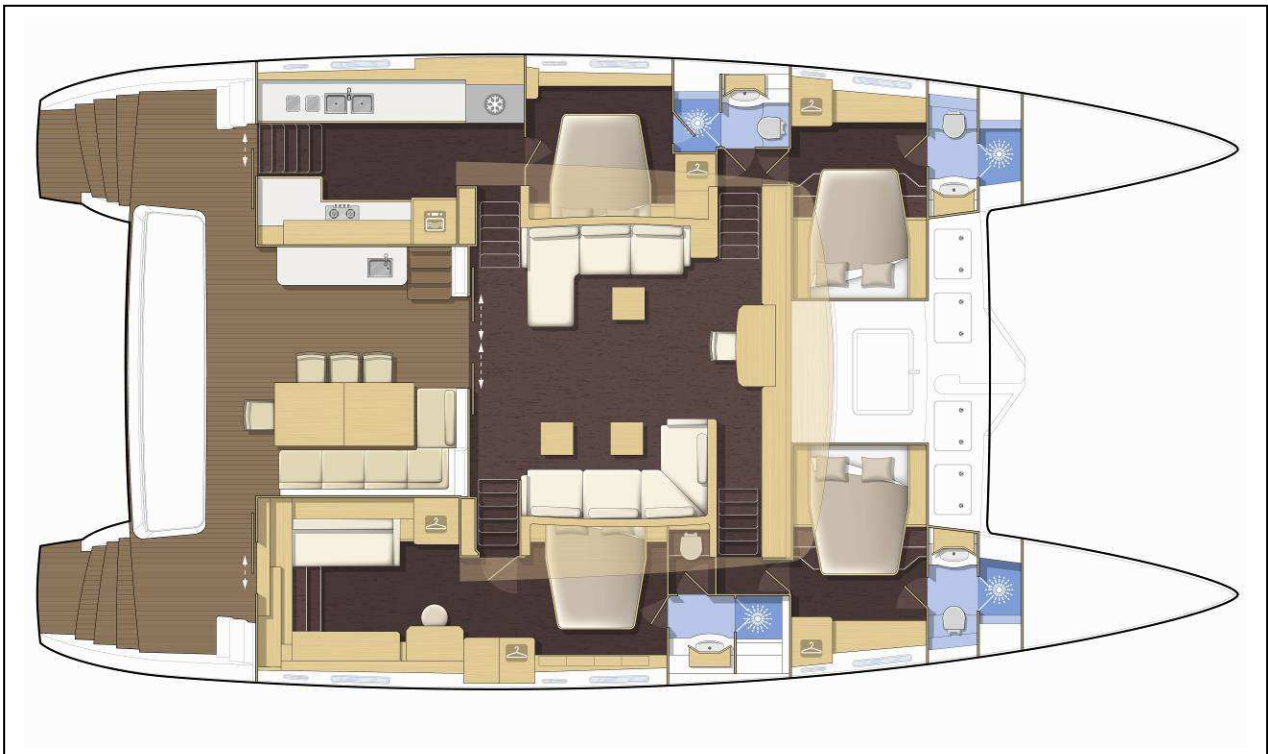
- Solid countertop (Iro G120) and fiberglass washbasin
- Separate shower stall with plexiglass door.
- Non skid floor in bathroom and shower stall.
- Vanity cabinet and mirror.
- Electrical Tecma fresh water toilet
- Toilet paper holder.
- Soap holder.
- Wall mounted towel holder.
- Headroom 2.05m (6'9").
- Opening deck hatch with mosquito screen and blind.

- 3 spotlights.

#### DEDICATED LAYOUT FOR 4 AND 5 CABIN VERSIONS

#### **VERSION 4** : 4 CABINS GALLEY DOWN VERSION (aft starboard owner's cabin)

- ⇒ 4 double cabins including owner's cabin with private salon.
- ⇒ 4 bathrooms :
- 1 owner's bathroom with separate shower stall and separate head.
- 1 port amidships bathroom with separate shower stall.
- 2 symetrical forward port and starboard bathroom modules with separate shower stalls.



#### OWNERS CABIN AFT STARBOARD :

- Access from the salon through companionway and wooden door
- 2 persons sofa on inboard side.
- Bookshelf on aft bulkhead.
- 2 hanging lockers with lighting and shelves on outboard side.
- Vanity.
- 1 chest of drawers on outboard side.
- Queen size bed with side access and wood slats under mattress.
- Upholstered head board.
- Underbed storage.
- Bedside storage.
- Storage locker on outboard side.
- 2 opening port holes.
- 2 large one way hull windows.
- Opaque window curtains.
- 3 opening deck hatch with mosquito screens and blinds.
- Large glass sliding access door for direct access to cockpit and starboard side transom.
- Direct access to the bathroom. Mirror behind door
- Minimum headroom 2.05m (6'9" ).
- 4 x 220V outlets
- General cabin lighting with two way switch by bed side and reading lights.

#### OWNER'S BATHROOM :

- Solid material countertop (Iro G120) and fiberglass washbasin
- Separate shower stall with plexiglass door.
- Non skid floor in bathroom and shower stall.
- Storage and mirror.
- Toilet paper holder.
- Soap holder.
- Wall mounted towel holder.
- Minimum headroom 2.05m (6'9" ).
- Opening deck hatch with mosquito screen and blind.
- 3 spotlights.
- Separate head compartment with mechanical ventilation and Electrical Tecma fresh water toilet

#### FORWARD STARBOARD CABIN :

- Access from the forward companionway through wooden door
- Queen size bed with side access and wood slats under mattress.
- Upholstered head board.
- Underbed storage.
- Bedside storage.

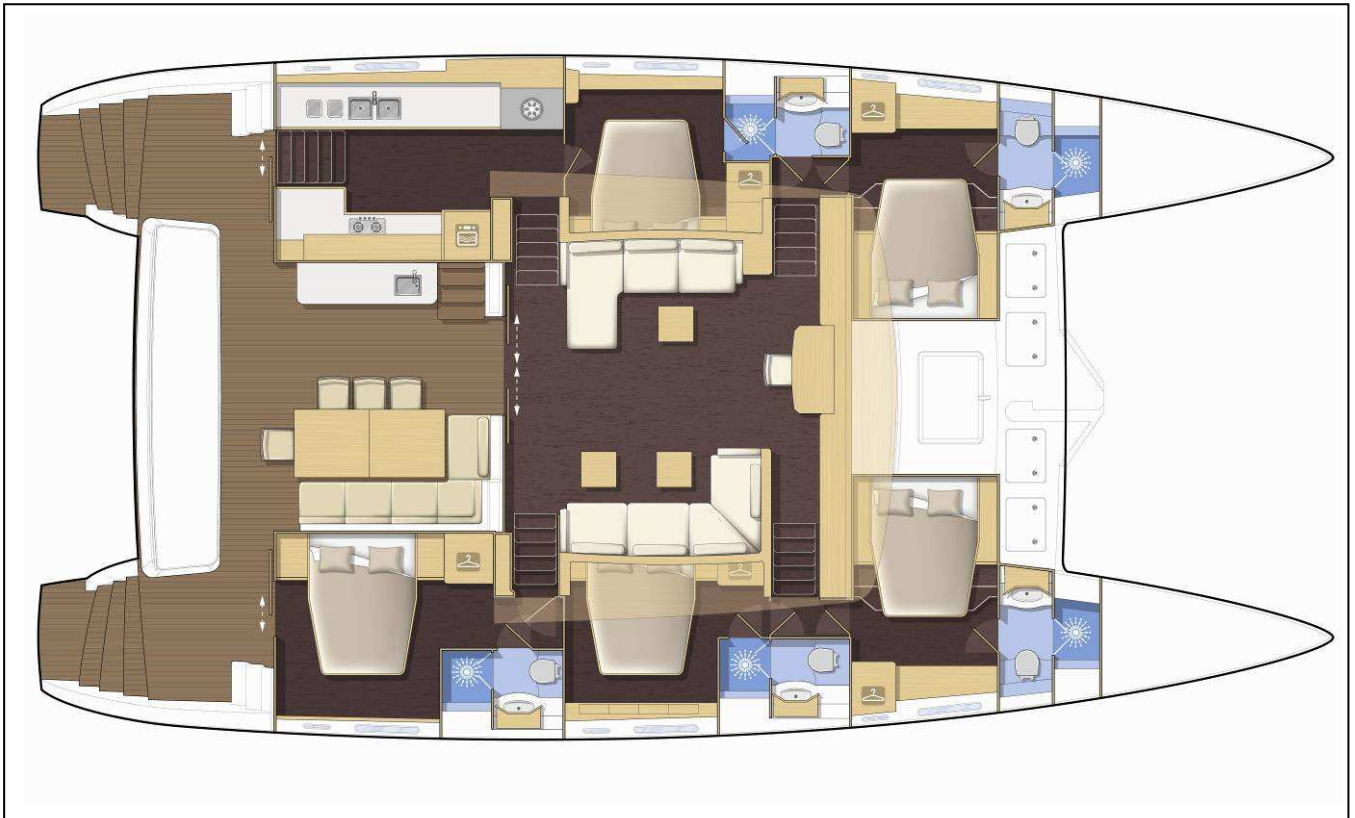
- Hanging locker with light and shelves.
- Bookshelf on outboard side.
- 1 opening port hole.
- Large one way hull window.
- Opaque window curtains.
- Opening deck hatch with mosquito screen and blind
- Direct access to the bathroom . Mirror behind door
- Minimum headroom 2.05m (6'9" ).
- 2 x 220V outlets
- Upholstered panels on ceiling counter mold.
- General cabin lighting with two way switch by bed side and reading lights.

#### BATHROOM FORWARD STARBOARD CABIN:

- Solid countertop and fiberglass washbasin (Iro G120).
- Separate shower stall with plexiglass door.
- Non skid floor in bathroom and shower stall.
- Vanity cabinet and mirror.
- Electrical Tecma fresh water toilet
- Toilet paper holder.
- Soap holder.
- Wall mounted towel holder.
- Headroom 2.05m (6'9").
- Opening deck hatch with mosquito screen and blind.
- 3 spotlights.

## **VERSION 5 : 5 CABINS, GALLEY DOWN VERSION :**

- ⇒ 5 double cabins
- ⇒ 5 toilets with separated showers



### AFT STARBOARD CABIN:

- Access from the salon through companionway and wooden door
- Queen size bed with side access and wood slats under mattress.
- Upholstered head board.
- Underbed storage.
- Bedside storage.
- Storage locker with light on outboard side.
- 1 opening port hole.
- 1 large one way hull window.
- Opaque window curtains.
- 1 opening deck hatch with mosquito screen and blind.
- Large glass sliding access door for direct access to cockpit and starboard side transom.

- Direct access to the bathroom. Mirror behind door
- Minimum headroom 2.05m (6'9" ).
- 2 x 220V outlets
- Upholstered panels on ceiling counter mold.
- General cabin lighting with two way switch by bed side and reading lights.

#### AFT STARBOARD BATHROOM:

- Solid countertop (Iro G120) and fiberglass washbasin.
- Separate shower stall with plexiglass door.
- Non skid floor in bathroom and shower stall.
- Vanity cabinet and mirror.
- Electrical Tecma fresh water toilet
- Toilet paper holder.
- Soap holder.
- Wall mounted towel holder.
- Headroom 2.05m (6'9").
- Opening deck hatch with mosquito screen and blind.
- 3 spotlights.

#### STARBOARD AMIDSHIPS CABIN:

- Access from the starboard forward gangway through wooden door
- Queen size bed with side access and wood slats under mattress.
- Upholstered head board
- Bedside storage.
- Underbed storage
- Hanging locker with light and shelves.
- 1 opening port hole.
- Large one way hull window.
- Opaque window curtains.
- Opening deck hatch with mosquito screen and blind.
- Direct access to the bathroom through shower. Mirror behind door.
- Minimum headroom 6'9".
- 2 x 220V outlets.
- Upholstered panels on ceiling counter mold.
- General cabin lighting with two way switch by bed side and reading lights.

#### STARBOARD BATHROOM AMIDSHIPS CABIN:

- Access to this bathroom from gangway for day head use.
- Solid material countertop (Iro G120) and fiberglass washbasin.
- Separate shower stall with plexiglass door.
- Non skid floor in bathroom and shower stall.
- Vanity cabinet and mirror.

- Electrical Tecma fresh water toilet
- Toilet paper holder.
- Soap holder.
- Wall mounted towel holder.
- Headroom 2.05m (6'9").
- Opening deck hatch with mosquito screen and blind.
- 3 spotlights.

#### FORWARD PORT CABIN :

- See 4 cabins version

#### FORWARD PORT BATHROOM :

- See 4 cabins version

### **DECK**

#### **TRANSOMS**

##### **Standard :**

- Teak on steps.
- 2 handrails + 1 transom shower on each transom.
- 1 foldable and removable swim ladder on starboard transom.

#### **COCKPIT**

##### **Standard :**

- No step between cockpit and salon
- Teak cockpit floor
- L shape settee
- Storage under settee.
- Large teak cockpit table made of 2 separate tops.
- 3 door cockpit locker with sink and solid material countertop (Iro G120).
- Cockpit fridge 80 L (21 US Gal)
- 8 spotlights with dimmer switch.
- Storage in cockpit ceiling.
- Aft crossbeam with 4 storage lockers, sun lounging area, dedicated space for 2 X 10-person life raft, stainless steel railing.

## FLYBRIDGE

### Standard :

- access from cockpit through stairway with teak steps on stainless steel frame.
- stairway closing system
- 2 helm stations including:
  - 1100mm (3'7'') diameter wheels.
  - Instrument pod
  - engine throttles and control panels on port steering station
  - cushions for settees + backrest
  - 1 steering compass
  - Windlass control on port steering station
- Large settee across entire width of flybridge
- L shape settee with coffee table.
- All lines come back in forward-most part of the flybridge around 4 winches
- 4 lines storage boxes
- Recessed sun lounging area in roof aft of mast base.
- 1 storage locker (housing for optional flybridge fridge).
- Settee and sun lounging cushions are optional.

## FOREDECK

### Standard :

- 1 deck hatch to access tech compartment :
  - house battery bank.
  - dedicated area for genset (optional), chargers (optional), inverter (optional), dive compressor (optional)
- 2000W 24V electric windlass on deck with horizontal gipsy (14mm chain) and remote control
- Chain locker to starboard of the windlass.
- 3 deck lockers 2 on port and 1 on starboard.
- Longitudinal Compression beam including anchor chain run, forestay chain plate, staysail and genaker tack fittings (staysail and genaker optional).

## BOW LOCKERS

### Standard :

- Access through a deck hatch.



## DECK HARDWARE

### Standard :

- Harken deck gear
- 1 X STEVA 74.2 mainsail halyard electric winch
- 3 X STA 74.2 manual winches : 2 for genoa sheets and 1 for reefing lines and traveller lines
- Running rigging :
  - 1 double purchase spectra mainsail halyard
  - 1 spectra Genoa halyard that can be terminated at mast base on adjustment track.
  - 1 boom topping lift
  - 3 reefing lines
  - Genoa sheets
  - Mainsail sheet leading back to winches via boom
  - Main traveller adjustment next to port side helm station
- Electric genoa furler with control on flybridge
- Pulpits with wooden seats
- Stanchions 840mm (2' 9"), 3 level lifeline, 1 lifeline gate on each side.
- teak toe rail

## OPENINGS

### Standard :

- All windows in grey tinted Plexiglass
- Recessed Lewmar deck hatches
- Lewmar port holes
- Plexiglass one way pictures windows
- Plexiglass salon windows
- Safety Glass Salon Door with white lacquered aluminium frame
- 2 sets of tinted safety glass doors with sliding panel to access galley on port, and cabin on starboard

## MAST RIGGING

- Mast and boom in white painted aluminium.
- Fiberglass longitudinal crossbeam.
- Aluminum transversal crossbeam.
- Adjustable lazy-jack on spreaders.

## **SAILS**

### **Standard**

- Full Batten double thickness 146m<sup>2</sup> (1571 sq Feet) « Dymension Polyant » - type Mainsail. 3 reefs.
- Double thickness 97m<sup>2</sup> (1044 sq feet) « Dymension Polyant » - type Furling genoa. UV protective pane.

## **BOOT STRIPE AND LOGOS**

### **Standard :**

- 1 navy blue boot stripe with Lagoon Logo at the bow and "Lagoon 620" Lettering on the front.
- Navy blue stripe across the middle of the port holes
- Lagoon logo on roof
- Name of the boat and hailing port on transom steps

## **CONSTRUCTION**

- Infused fiberglass + balsa core with polyester and vinylester resin with anti osmosis barrier. Hull bottom and keels in solid infused laminate.
- Infused Balsa core structural bulkheads.
- Grey paint coat in bilges.
- White gel coat hulls.
- White gel coat decks with non skid areas.

American specifications include :

- 110V AC circuit
- 110V heating element in water heater
- Propane instead of butane for stove and oven

## GENERAL SPECIFICATION.

|                         |                               |
|-------------------------|-------------------------------|
| LOA:                    | 18,90 m → 62'                 |
| LWL:                    | 18,20 m → 59,9'               |
| BOA:                    | 10,00m → 32'10''              |
| Drafft:                 | 1,55 m → 5'1''                |
| Light displacement EEC: | 27t → 59535 Lbs               |
| Loaded displacement     | 35t → 77175 Lbs               |
| Hull_roof height:       | 5,50m → 18'1''                |
| Bridge deck clearance:  | 1,00m / 0,45m → 3'3'' / 1'6'' |
| WL to mast head:        | 31m → 101'9''                 |

### Sail area:

|                            |   |
|----------------------------|---|
| Full batten mainsail:      | 146m <sup>2</sup> → 1 571 ft <sup>2</sup> |
| Genoa on furler:           | 97m <sup>2</sup> → 1044 ft <sup>2</sup>   |
| Furling staysail (option): | 51.5m <sup>2</sup> → 554 ft <sup>2</sup>  |
| Spinnaker (option):        | → ft <sup>2</sup>                         |
| Genaker (option):          | 175m <sup>2</sup> → 1883 ft <sup>2</sup>  |
| Beating surface:           | 243m <sup>2</sup> → 2615ft <sup>2</sup>   |
| Reaching Surface:          | 321 m <sup>2</sup> → 3454ft <sup>2</sup>  |

|         |                                      |
|---------|--------------------------------------|
| Water : | 4 x 240L -> 960L total → 254 US Gal  |
| Fuel:   | 2 x 650L -> 1300L total → 343 US Gal |

|        |                                     |
|--------|-------------------------------------|
| Engine | 2 Diesel VOLVO D3-110HP at 3000 RPM |
|--------|-------------------------------------|

|                 |   |
|-----------------|---|
| Interior wood : | Light oak Alpi woodwork – laminate floor: colour: wenge |
|-----------------|---|

|             |   |
|-------------|---|
| Architects: | Marc Van Peteghem & Vincent Lauriot Prevost |
|-------------|---|

|                  |                      |
|------------------|----------------------|
| Interior Design: | Couedel Hugon Design |
|------------------|----------------------|

