

MARTEN 49 SPECIFICATIONS

Designer:	Reichel Pugh
Length Overall:	15m / 49.21ft
Length Waterline:	13.53m / 44.4ft
Beam:	4.17m / 13.68ft
Ballast:	4,600kg / 10,141lb
Displacement (lightship):	9,500kg / 20,943lb
Displacement (sailing):	11,229kg / 24,755lb
Draught (keel down):	3.6m / 11.8ft
Draught (keel up):	2.1m / 6.89ft
Sail Area:	144sqm / 1550sq.ft
Fuel Capacity:	170L / 37 UK gal
Fresh Water Capacity:	320L / 70 UK gal

Photography
 Exteriors - A Francolini
 Interiors - I Wilkins & A Francolini

This brochure is for promotional purposes only and cannot form part of any contract or offer. Illustrations in this brochure may show optional equipment and accessories not fitted as standard. While Marten Yachts has endeavoured to ensure that all representations, specifications and descriptions contained in this brochure are correct at time of printing, yacht features are subject to change without notice. To ascertain current information on specifications, options and accessories, please refer to martenyachts.com or consult your Marten Yachts agent. Published February 2009.



M49

MARTEN engineered exhilaration

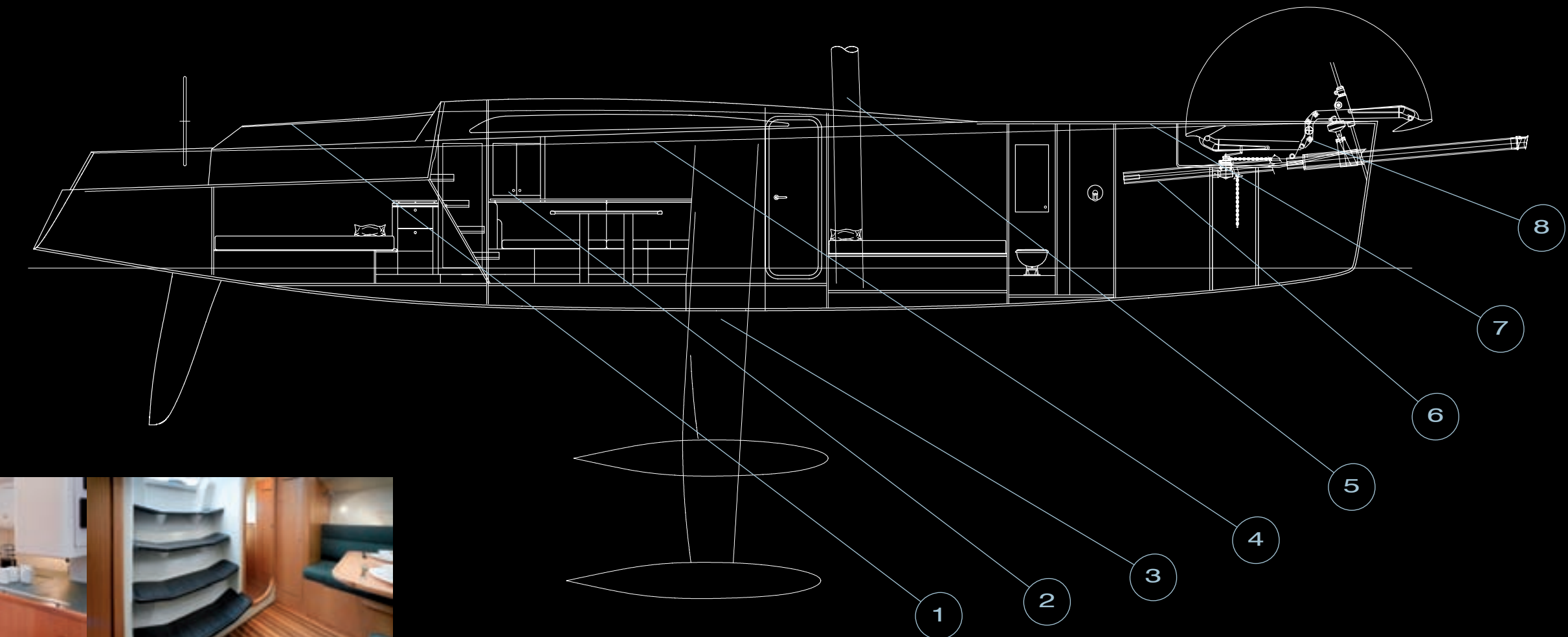
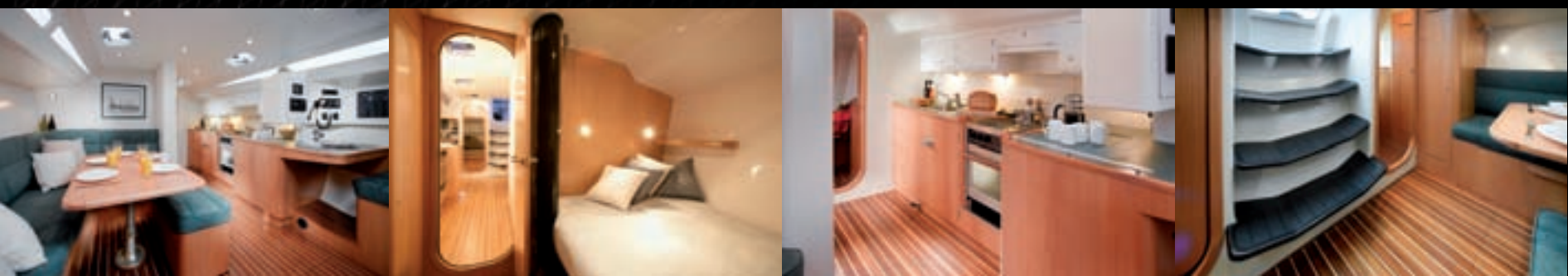
Marten Yachts - Head Office: Suite 110 Jones Bay Wharf, Pirrama Road, Pyrmont, NSW, 2009, Australia.
 Telephone +61 (2) 8586 1497 Facsimile +61 (2) 8586 1420, www.martenyachts.com info@martenyachts.com

A brand of Azzura Marine



MARTEN 49

Few things in life exceed expectations quite like the Marten 49. Fewer still take sheer excitement to new extremes. From its sleek, contemporary racing lines to its luxuriously appointed interior, the Marten 49 delivers effortless style, unrivalled functionality and dynamic flair. Designed to be a superb family cruising yacht, competitive at regattas and to be a fast and comfortable passage maker, its spirit promotes a universal appeal which can be customised to express the individuality of each owner. Thoughtfully designed to the highest ergonomic standards, the Marten 49 allows space and comfort for guests, yet can be sailed by just two people, affording you one of the greatest luxuries of all, privacy. Offering a remarkable blend of agility, stability, safety and performance, this truly unique yacht will evoke a passion that is destined to endure. Engineered to exhilarate, the Marten 49 will be one of the most rational decisions your heart will ever make.



MARTEN engineered exhilaration

M49 INNOVATIONS

- **1** **CARBON FIBRE HULL**
The hull, deck and bulkheads are carbon fibre and foam sandwich construction, enabling maximum strength, yet minimum weight for optimal sailing performance.
- **2** **LIGHTWEIGHT INTERNAL DOORS AND CABINTRY**
To further enhance the weight saving objective, joinery is comprised of composite panels and aluminium honeycomb cored doors with a blend of painted surfaces and timber veneers.
- **3** **HYDRAULIC LIFTING KEEL**
A hydraulic lifting keel allows maximum draught for greater stability and upwind performance when sailing, as well as a reduced draught for access into shallow water harbours and bays.
- **4** **BELOW DECK LINES**
Wherever possible, halyards and sheets are cleverly concealed below deck to complement the sleek appearance and allow for safe, easy movement around the deck.
- **5** **CARBON FIBRE RIG**
The custom carbon fibre mast and boom delivers superior strength and stiffness for functionality and seaworthiness, along with the benefits of weight savings and a resistance to fatigue and corrosion.
- **6** **RETRACTABLE CARBON BOW PROD**
The retractable centreline carbon bow prod promotes the ability to effortlessly fly a gennaker whether racing or sailing short-handed, yet is virtually invisible when retracted.
- **7** **FLUSH CARBON HATCHES**
Flush carbon hatches are strong, light and free from corrosion, while providing an abundance of natural light and ventilation without compromising the aesthetic appearance of the beautiful, clean deck line.
- **8** **FOLDAWAY ANCHOR SYSTEM**
The lightweight carbon foldaway anchoring system is stowed below deck aft of the bow and can be easily swung into its usable position when required.

Combining engineering integrity and inimitable design with uncompromising attention to detail, the Marten 49 presents an innovative interpretation of the performance cruiser concept.



M49