



KER 40


Ancasta
INTERNATIONAL BOAT SALES
McCONAGHY



KER 40

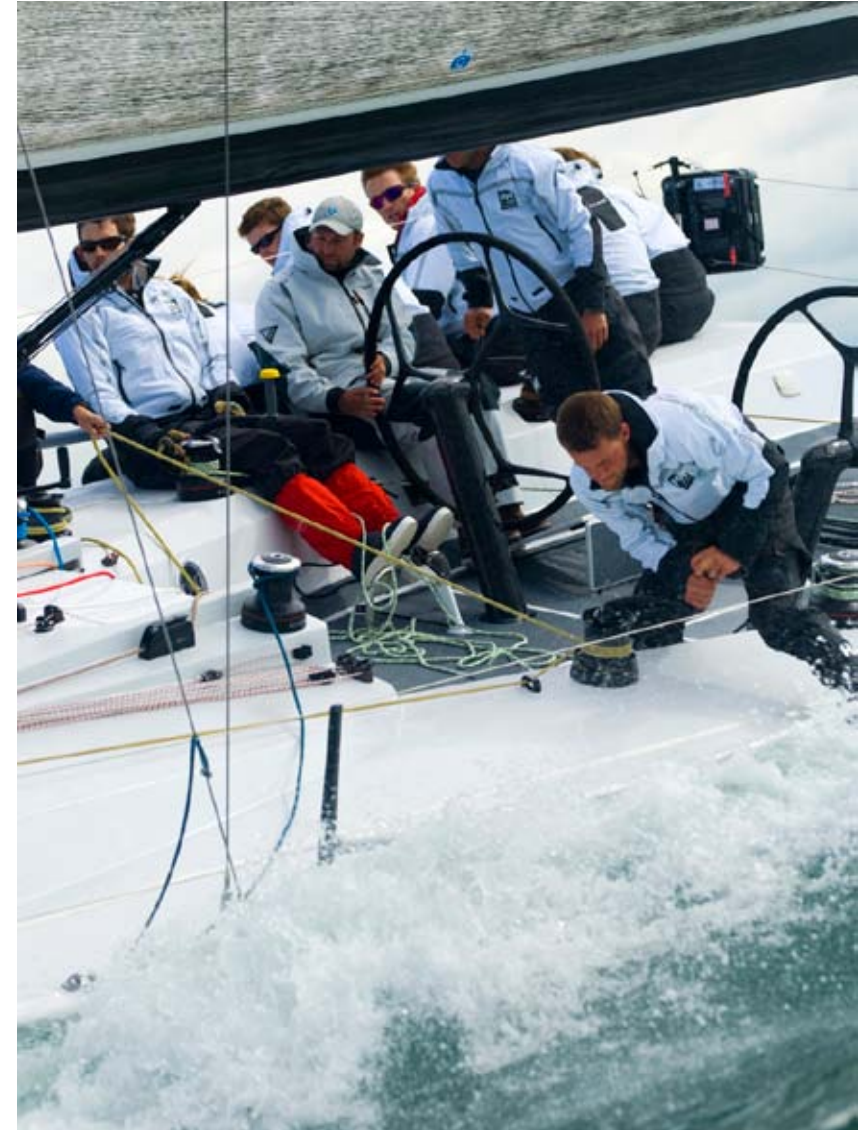
McCONAGHY

INTRODUCTION

The Ker 40 is a light displacement, high performance, IRC Race Yacht designed by talented British designer Jason Ker. Over the last ten years his designs have stormed onto the international sailing scene in no uncertain terms. In what has been termed the “perfect team” Ker’s creation are being expertly crafted by McConaghy Boats.

The Ker 40 is for top level racing in local and international regattas. Designed and optimised for the IRC and ORC rating rules. The concept and design features are dedicated to providing the next step in mixed fleet racing. A lighter, faster boat that still rates very well under various handicapping systems. The boat is built to the highest standards, utilising the latest hi-tech material and building techniques, comparable with the ones used in Americas Cup Yacht construction and fit out.

It is a top end race boat that is exciting to sail and has the capacity to race across a wider range of racing categories. Available for inspection at Hamble Yacht Services, nr Southampton England.





KER 40

McCONAGHY

SPECIFICATION

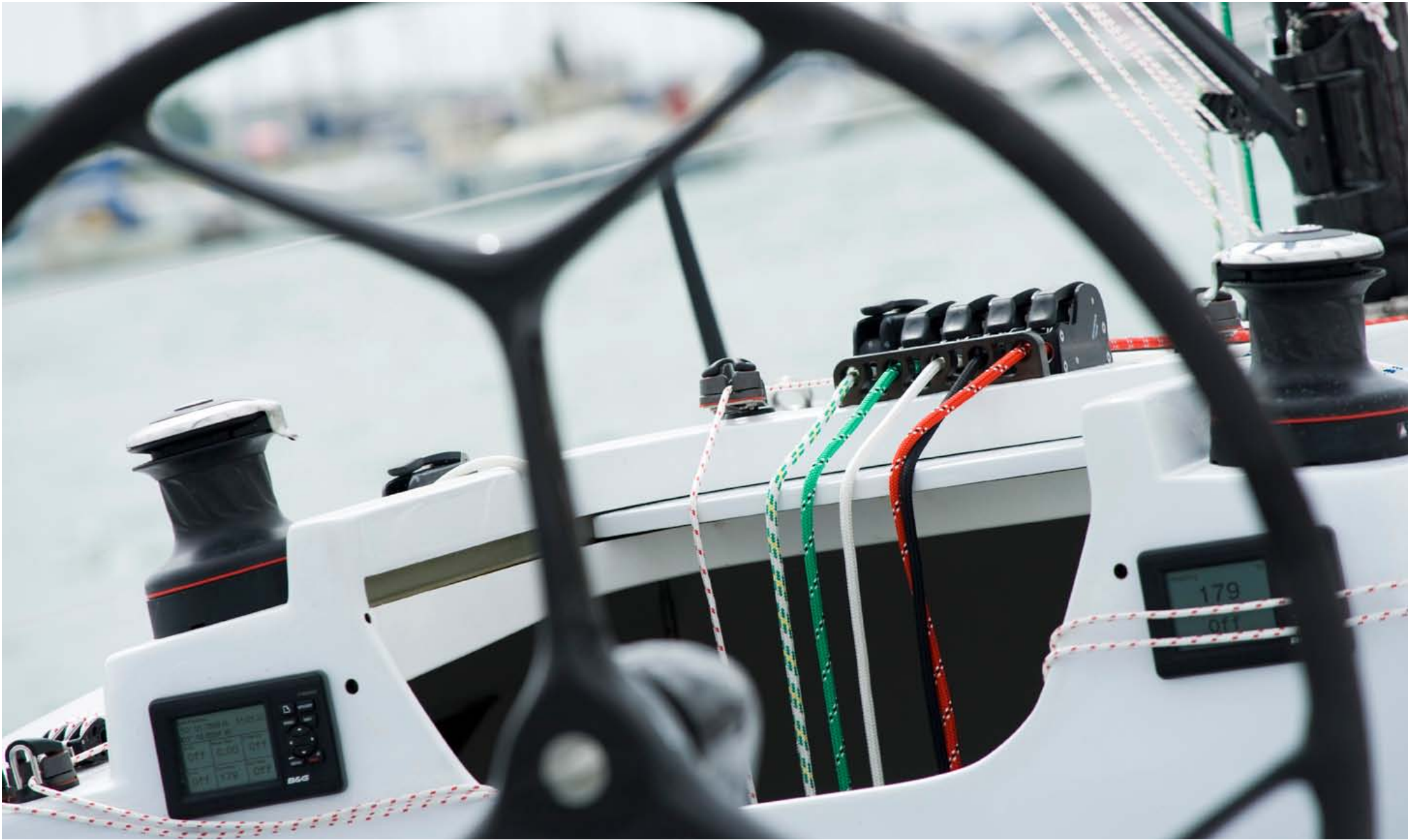
Model	Ker 40
Manufacturer	McConaghy
Length Overall	12.20m
Max Beam	4.15m
Draft	2.60m
Displacement (lightship)	4,800 kg
Engine Power	30hp
Fuel Capacity	40 litres
Fresh Water Capacity	70 litres
ISO Structural	Cat. A
ISAF OSR	Cat. 1
SAIL PLAN	
P	16.59m
E	5.32m
I	16.02m
J	4.84m
SPA	170m ²
STL	6.75m

CONSTRUCTION

- A full optimised structural design using advanced Finite Element Analyses techniques
- Design and constructed in accordance to ISO structural regulations to Class A with plan approval by Germanischer Lloyd
- The hull and deck constructed from vacuum consolidated e-glass/epoxy/foam sandwich
- Additional reinforcements in way of all deck fittings and other highly loaded areas
- The structural internals from vacuum consolidated e-glass/epoxy/foam with sandwich construction uni-directional fibre reinforcement.
- Non structural internal components are built from E-Glass/epoxy/foam sandwich construction

EXTERIOR & INTERIOR FINISH

- Awl Grip paint finish to top sides and deck gloss areas
- Paint finish Non-skid areas on deck
- Cockpit Floor: Non-skid grip tape
- Below water line Finished with Epoxy primer
- Interior: Living area satin white, other areas light weight peel ply racing finish



KER 40

McCONAGHY

MACHINERY & INTERIOR

ENGINE

- 30 hp Yanmar diesel engine with Sail Drive
- Folding 2 bladed prop
- Spinlock flush throttle control
- 40 Litre rigid plastic fuel tank (60 litre optional)

ELECTRICAL

- Red/white cabin lighting in saloon, galley, heads and navigation areas
- 12 volt DC switch panel Battery isolator/selection switch
- 2 x House Batteries,
- 1 x Engine Battery
- Navigation Lights Pulpit, Pushpit mounted

PLUMBING

- Freshwater Hand pump at galley sink
- Lightweight head
- 2 Manual bilge pumps
- 2 x 50 liter fresh water bladder tank

INTERIOR

- Navigation station
- Galley: 2 x sinks & 2 x burner stove
- Head located fwd of mast bulkhead
- 4 x pipe cots
- Engine box with integrated bottom steps





KER 40

McCONAGHY

RIG & DECK

DECK HARDWARE

- 2 x Primary Winches Harken B50.2 PTA
- 2 x Pit Winches Harken B46.2 STA
- 2 x Main Sheet Winches Harken B 46.2 STA
- 2 x Backstay Winches Harken B 35.2 STA
- 7 x Spinlock Clutches along with custom organizers
- McConaghy autoclaved glass aerofoil Stanchions & Pulpit
- McConaghy autoclaved glass single leg Pushpit
- Stainless steel 1/19 wire lifelines.
- 4 x Clear dinghy hatches in cockpit sides for rope stowage
- Hall Spars Carbon 2 Spreader Rig (Split as option)
- 2 x Sets Hall Spars carbon spreaders
- Nitronic 50 standing rigging
- Wire turnbuckle deck ties
- Kevlar backstay
- Hall Spars Carbon Boom
- 2 reef lines (single clutch)
- Hall Spars quick vang
- Harken Carbo foil head foil

RUNNING RIGGING

- 2:1 Mainsail halyard
- 1 x Fractional Jib halyard
- 1 x fractional Spin / jib halyard
- 2 x Masthead spinnaker halyards
- 1 x Mainsheet
- 2 x Spin sheets
- 2 x Jib sheets Traveler with purchase
- Main Cunningham with purchase
- Outhaul purchase in boom
- 2 x Reeflines
- Vang purchase
- Jib car in haul adjuster with purchase
- Jib lead up down adjuster with purchase
- 2 x Spinnaker tack lines
- 2 x Topmast Backstay Tails
- 1 x Bob Stay

SAFETY ON DECK

- 1 Set of composite pulpits
- 2 composite pushpits
- Double life line with composite stanchions
- 1 composite CL stanchion aft
- Foredeck toe rails to ORC standards
- Clipping on points using Wichard folding pad eyes to ISAF OSR standards

KEEL, FIN AND BULB

- A generously sized deep 'T' shaped lead bulb keel with a high Ballast to Displacement ratio
- Keel and Keel attachment is in accordance to ISO structural regulations to Class A with plan approval by Germanischer Lloyd
- Deep SG Iron fin keel
- Lead T-Bulb
- Highly structurally efficient anodized aluminium alloy keel structure transferring keel loading to boat structure
- Fin and Bulb are delivered faired, primed and top-coated.

STEERING SYSTEM

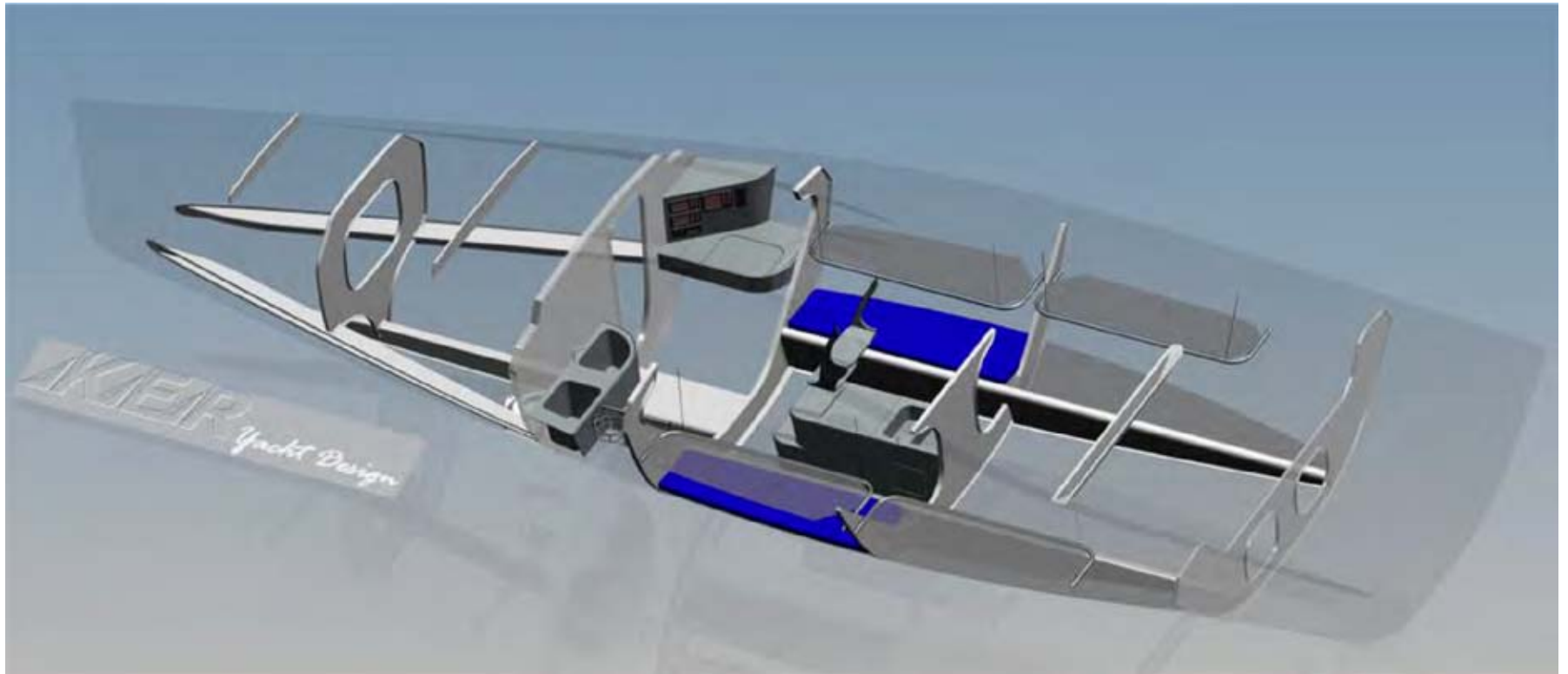
- Autoclaved prepreg carbon rudder stock
- Corecell foam cored, carbon skin rudder blade
- Autoclaved Carbon Fibre Tiller + Spinlock Tiller extension
- JP3 Upper and Lower self-aligning rudder bearings



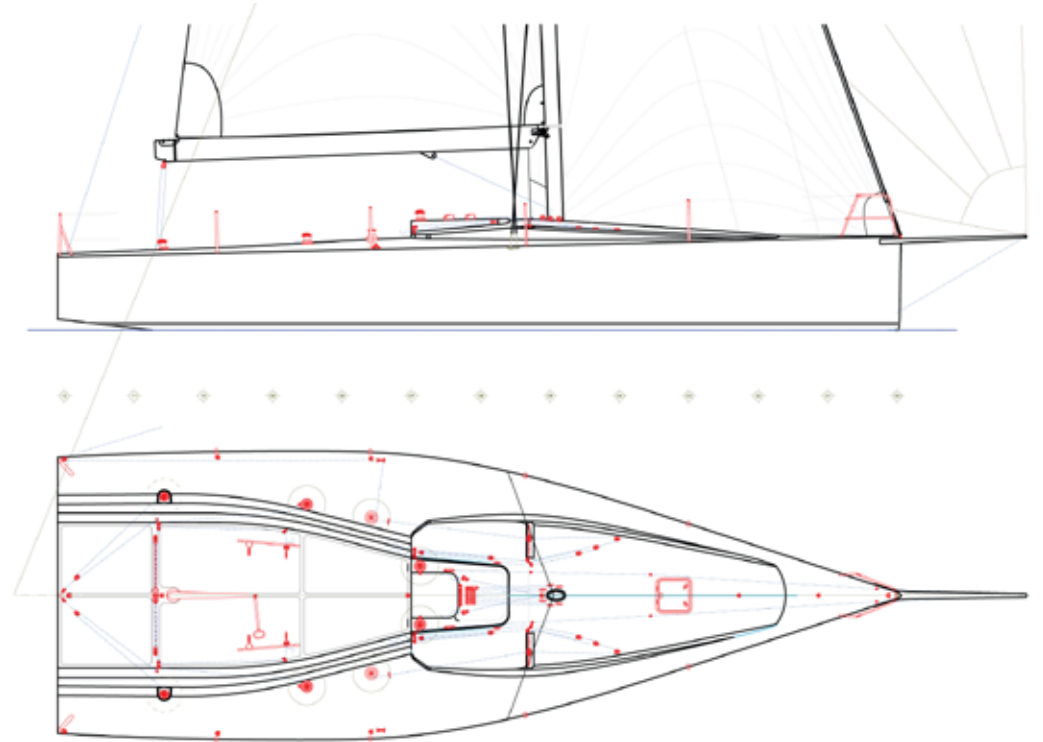
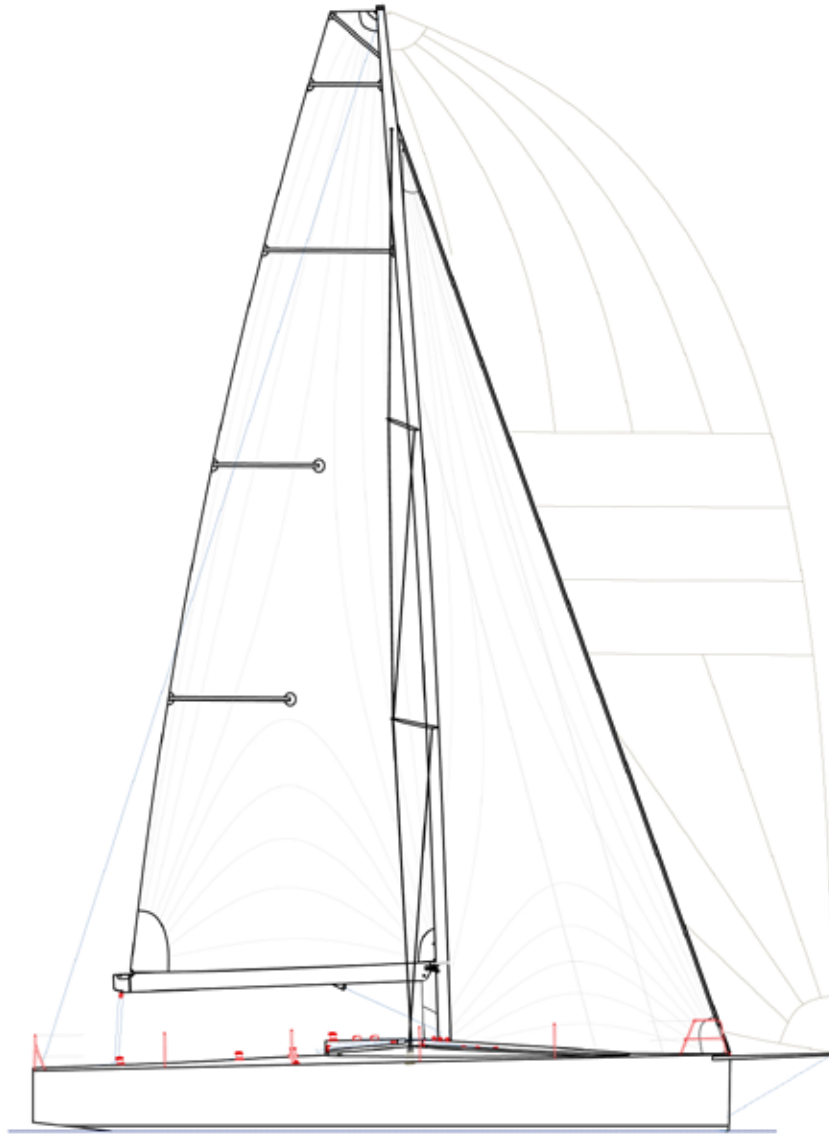
KER 40

McCONAGHY



LAYOUT



SAIL & DECK PLANS



IRC CERTIFICATE


Tel: +44 (0) 1590 677030 Fax: +44 (0) 1590 679479 E-mail: info@rorcrating.com www.rorcrating.com

Boat: Name: KERONIMO Sail Number: GBR6889R Cert No: 38549 TCC: 1.196 2011 Crew No.: 10		Stability SSS Base Value: 24 STIX: N/A AVS: N/A ISO/IRC Design Category: N/A ISAF Plan Review:
General Details Design: KER 40 2.60 Type: Bermudian Sloop Issue: New application Notes: Seahorse weighed: hull (full) & rig RORC measured Notes: Sail data from North		Series Date: 2011 Age Date: 2011 Hull Factor: 11.8 Rig Factor: 1.022
Hull LH: 12.15 LWP: 10.83 Hull Beam: 4.10 Boat Weight: 4846 DLR: 123 Draft: 2.6	Overhangs BO: 0.04 x: 0.00 h: 0.00 SO: 1.28 y: 0.15	Rig & Mainsail P: 16.59 E: 5.32 J: 4.71 FL: 17.29 MUW: 1.54 MTW: 2.24 MHW: 3.41
Headsail LLmax: 16.15 LL: 16.15 J: 4.71 LP: 4.94 HHW: 2.53 HTW: 1.35 HHB: 0.13 HSA: 40.72	Mizzen PY: 0.00 EY: 0.00 LPY: 0.00	Spinnaker SPA: 169.21 STL: 6.61 SLU*: 20.2 SLE*: 17.29 SF*: 10.54 SHW*: 10.96


* For information only

Detail Low vcg iron+lead keel No wing keel Inboard engine : Weight 144kg 2 blade folding/feathering propeller Internal ballast 0 kg Weight includes batteries/cushions ISAF OSR compliant guardrails fitted Manual power only for running rigging No variable/moveable ballast carried Forestay/Mast Foot not adjustable	No Spinnaker TCC: 1.163 Multiple headsails permitted Maximum number of spinnakers carried: 3 Bowsprit only 2 Spreader (sets) 0 Jumper (sets) 0 Runners (sets) 0 Checkstays (sets) Carbon Mast Rod standing rigging $HSA=0.125*LL*(2*LP+3*HWH+2*HTW)$ $SPA=((SLU+SLE)/2)*((SF+(4*SHW)/5)/0.83)$
---------------------------------------------------------------------------------------------------------------------------------------------------------------------------------------------------------------------------------------------------------------------------------------------------------------------------------------------------------------	---------------------------------------------------------------------------------------------------------------------------------------------------------------------------------------------------------------------------------------------------------------------------------------------------------------------------

Certificate issued by the IRC Rating Authority and VALID from 24 May 2011 09:57:42
 Expires 31 Dec 2011 unless superseded or invalidated by IRC Rules and Regulations
 I accept the dimensions shown on this certificate and agree to report all subsequent changes and any errors found at a later date to the issuing Authority
 Signed: _____ (Owner)

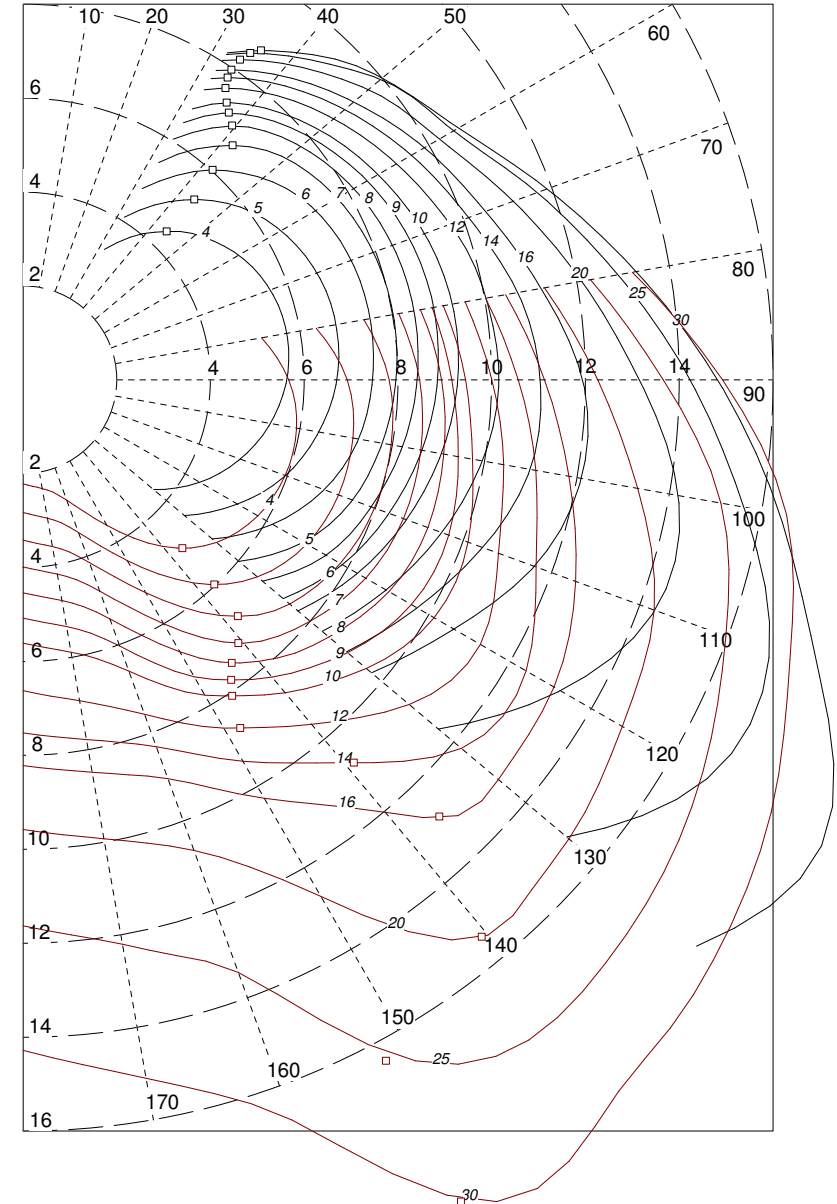


(C) RORC/UNCL 2011



www.oceansafety.com Your Life Saving Supplier

POLARS





KER 40

McCONAGHY

PRICING

Ker 40 Hull US \$298,000
 Inc Deck Hardware and Engine, Ex China excluding Sails
 See Specifications for full details
 Rig NZ \$76,450
 Exclusively supplied by Hall Spars Inc Mast, Boom,
 Rigging and Headstay Foil Ex New Zealand (paid in NZ\$)

OPTIONAL EXTRAS

WINCHES

Primary Winch Upgrade - Harken B500.3 TCR	US \$16,420
Pit & Mainsheet Winch Upgrade - Harken B50.2 STR	US \$21,550
Primary Winch Upgrade - Lewmar 50/3 AOR	US \$7,240
Pit & Mainsheet Winch Change - Lewmar 50 ASTOR	US \$6,435

MAST AND RIGGING OPTIONS

Main Halyard Lock	NZ \$5,400
Mast Head Halyard Lock for Code Zero	NZ \$5,450
Mast Jack	NZ \$4,400
Adjustable Mast Step	NZ \$650
Running Rigging upgrade package	NZ \$4,450
Split two piece Mast	NZ \$1,500
Instrument Bracket for 3 or 4 displays	NZ \$1,300
Tricolour Upgrade to LED	NZ \$900
SCR Carbon Rigging Round Upgrade	US \$31,500
Upgrade from SCR Carbon Rigging Round to Aerofoil	US \$5,300
PBO Rigging Upgrade	€ 23,200

SPINNAKER POLE OPTIONS

Spinnaker Pole	NZ \$3,800
Track and System	NZ \$3,640
Topping lift/Staysail halyard & sheave box	NZ \$995
Braces and down haul	NZ \$1,220
Brace Blocks and down haul deck hardware	US \$1,750

SUPPLY AND INSTALL

Spinnaker Pole Chocks on Deck	US \$795
Topping lift/staysail halyard mast base block - jammer Supply and Install	US \$1,200

STEERING PACKAGE UPGRADE

McConaghy Twin Carbon Wheels and System	US \$9,000
-----------------------------------------	------------

EXTERIOR

Dark Painted Topsides - AwlGrip plus higher HDT resin	US \$9,000
Custom Paint	POA
Cove Line or Boot Topping Stripes	US \$1,100

MISC

Single Point Lift System	US \$1,800
Upgrade to 60L Fuel Tank	US \$180
Dock Box - Large - L 3460 x W 390 x H 685mm	US \$710
Dock Box - Small - L 2155 x W 440 x H 515mm	US \$540
Collapsible Galvanised Cradle	US \$10,500
Cock Pit Rope and Tail Bags	POA
Winch Handle Pockets	US \$180

For further information please contact Nick Griffith, Ancasta Port Hamble
T. +44 (0)2380 450 000 / +44 (0) 7768 310 946 E. nickgriffith@ancasta.com

www.ancasta.com

